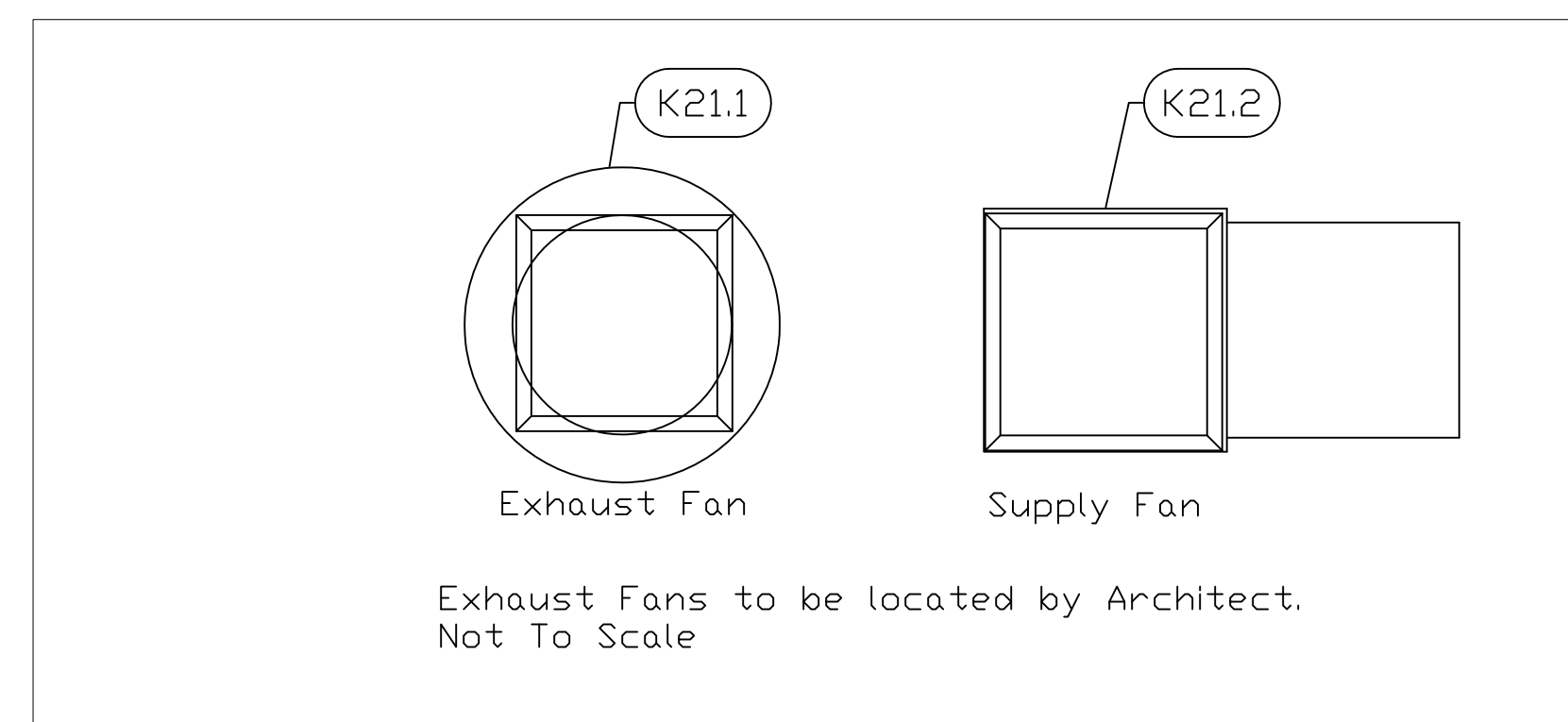


EQUIPMENT SCHEDULE				
ItemNo	Category	Mfr	Model	Quantity
B1	BOTTLE COOLER	GLASTENDER	ST72-S	1
B2	REFRIGERATED BACKBAR CABINET	GLASTENDER	BB60	1
B3	ICE CUBER	HOSHIZAKI	KM-320MAH	1
	ICE BIN	HOSHIZAKI	B-300SF	1
B4	UNDERBAR ICE BIN	GLASTENDER	IBA-30	1
B6	UNDERBAR SINK UNITS	GLASTENDER	TSB-36-S	1
B7	CORNER ANGLE FILLER	GLASTENDER	IFC-24/24	1
B8	BLENDER STATION	GLASTENDER	DBSA-18	1
B9	GARBAGE CAN	RUBBERMAID	FG354000GRAY	1
K1	REACH-IN REFRIGERATOR	TRUE	T-23	1
K1.1	REACH-IN FREEZER	TRUE	T-23F	1
K2	COUNTERTOP GRIDDLE	SOUTHBEND	HDG-24-M	1
K2.1	EQUIPMENT STAND	ADVANCE TABCO	ES-303	1
K3	RANGE, 36", 6 OPEN BURNERS	SOUTHBEND	4361D	1
K4	FRYER	SOUTHBEND	SB35S	1
K5	DISHWASHER, UNDERCOUNTER	JACKSON WWS	AVENGER HT	1
K6	COUNTERTOP HOTPLATE	SOUTHBEND	HDO-12	1
K7	REFRIGERATED SANDWICH UNIT	TRUE	TSSU-48-12D-4	1
K9	REACH-IN UNDERCOUNTER FREEZER	TRUE	TUC-27F	1
K10	MICROWAVE OVEN	PANASONIC	NE-17521	1
K14	OVERSHELF	ADVANCE TABCO	ODS-15-72	1
K15	THREE (3) COMPARTMENT SINK	ADVANCE TABCO	FC-3-1818-24RL	1
K16	WORK TABLE	ADVANCE TABCO	MS-303	1
K17	WORK TABLE	ADVANCE TABCO	KMS-305	1
K18	WORK TABLE	ADVANCE TABCO	KMS-363	1
K19	WIRE SHELVING UNIT	NEXEL	18606N	1
K20	WIRE SHELVING UNIT	NEXEL	18366N	1
K21	WALL HOOD	CAPTIVE-AIRE	HOOD 1	1
K21.1	EXHAUST FAN	CAPTIVE-AIRE	DU85HFA	1
K21.2	SUPPLY FAN	CAPTIVE-AIRE	INLINE1L-G10	1
K22	DISHTABLE SORTING SHELF	ADVANCE TABCO	DT-6R-22	2
K23	SHELVING, WALL-MOUNTED	ADVANCE TABCO	WS-15-84	2
K25	GARBAGE CAN	RUBBERMAID	FG354000GRAY	1
K26	GARBAGE CAN	RUBBERMAID	FG264300GRAY	1



EQUIPMENT LAYOUT

All Dimensions to be verified on the job site.
 Actual locations for floor drains, and any ventilating equipment to be determined by Engineer.
 Mechanical, Plumbing & Electrical to be checked and verified by Customers MEP Engineer.
 Remote Condensing Units to be located by Architect.
 Exhaust & Supply fans to be located by Architect.

Sail Rock
 Great House Kitchen & Bar
 South Caicos

Uni-Source Supply
 International Inc.
 2055 W 73rd Street, Miami, FL 33016
 Ph: (305)826-8696 Fax: (305)826-9131

No.	Revision/Issue	Date
1	Preliminary Layout	11-11-14
2	Added MEP Details.	12-5-14
3	Changes From 12-9-14 Meeting.	12-11-14
4	Changes to Fans after 12-12-14 meeting.	12-12-14

Date
Dec 12, 2014
 Drawn By
Dayne Gauntlett
 Scale
1/2" = 1'0"

Sheet
MK-1

Sail Rock
Great House Kitchen & Bar
South Caicos

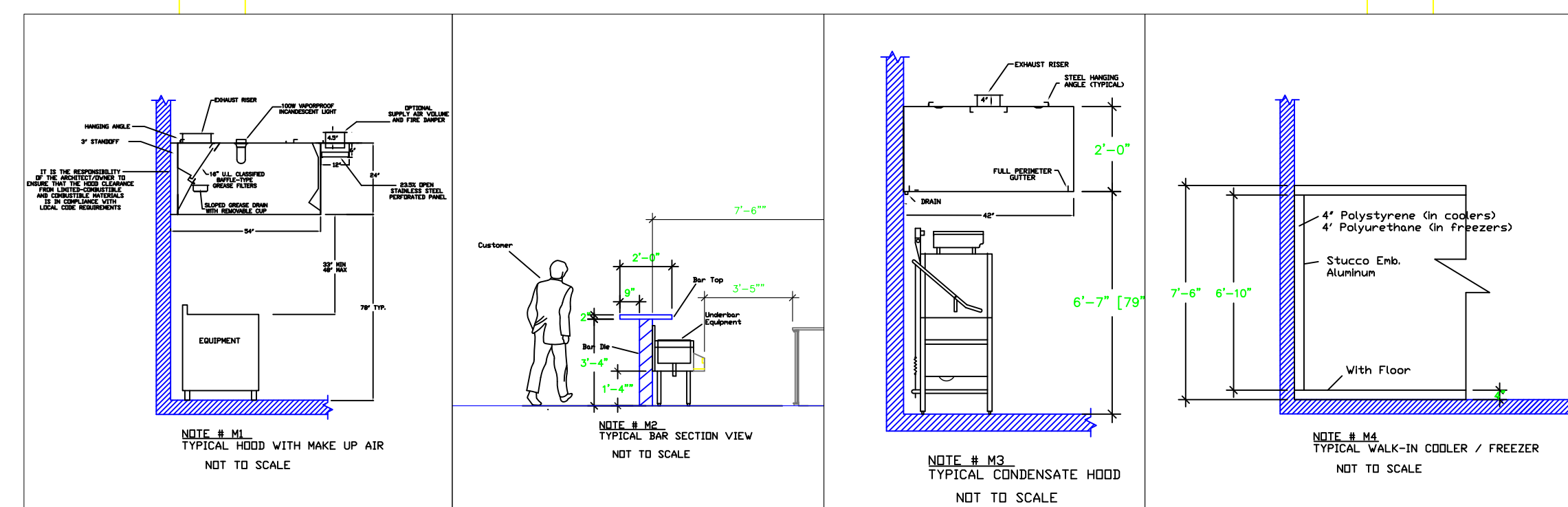
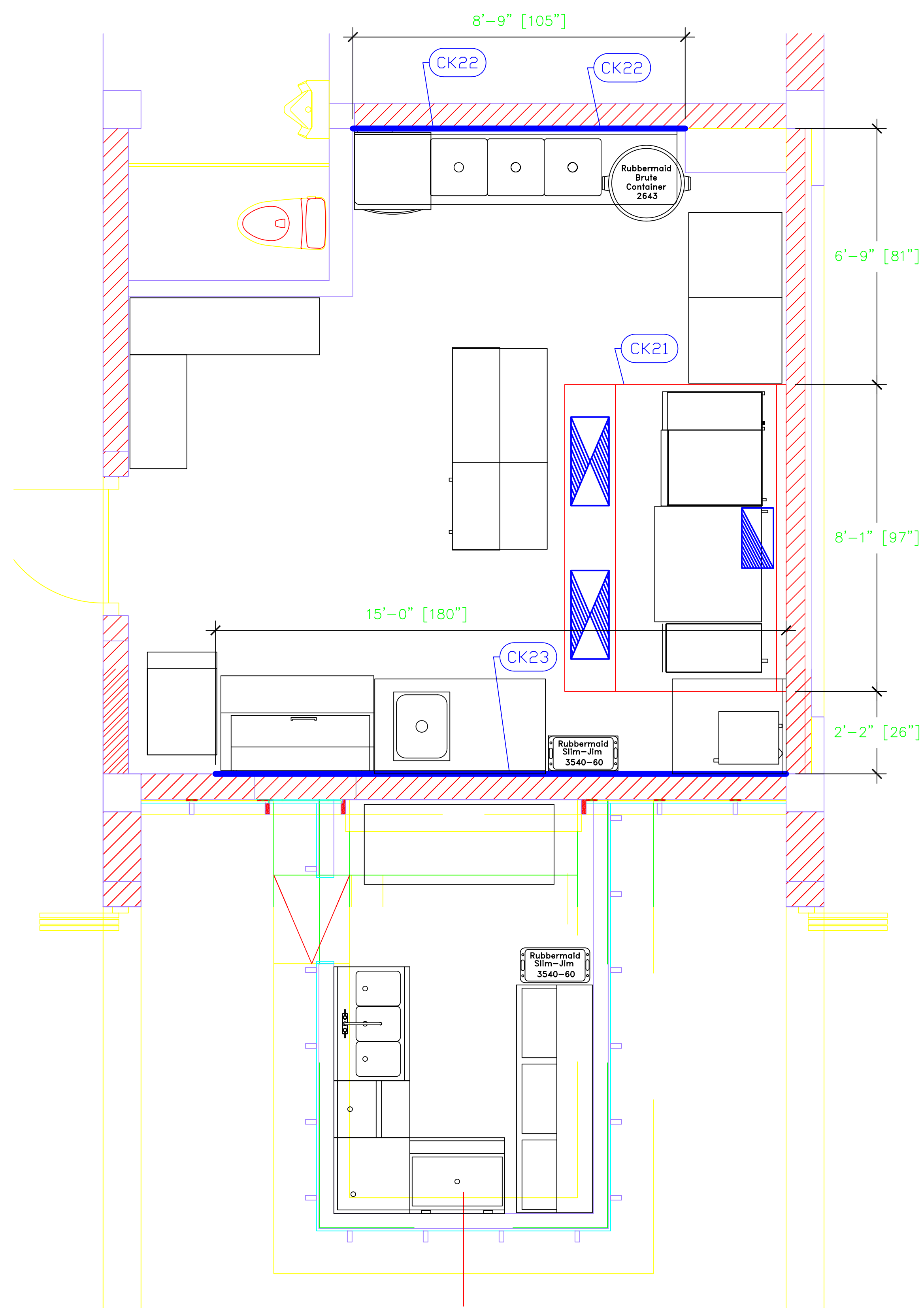
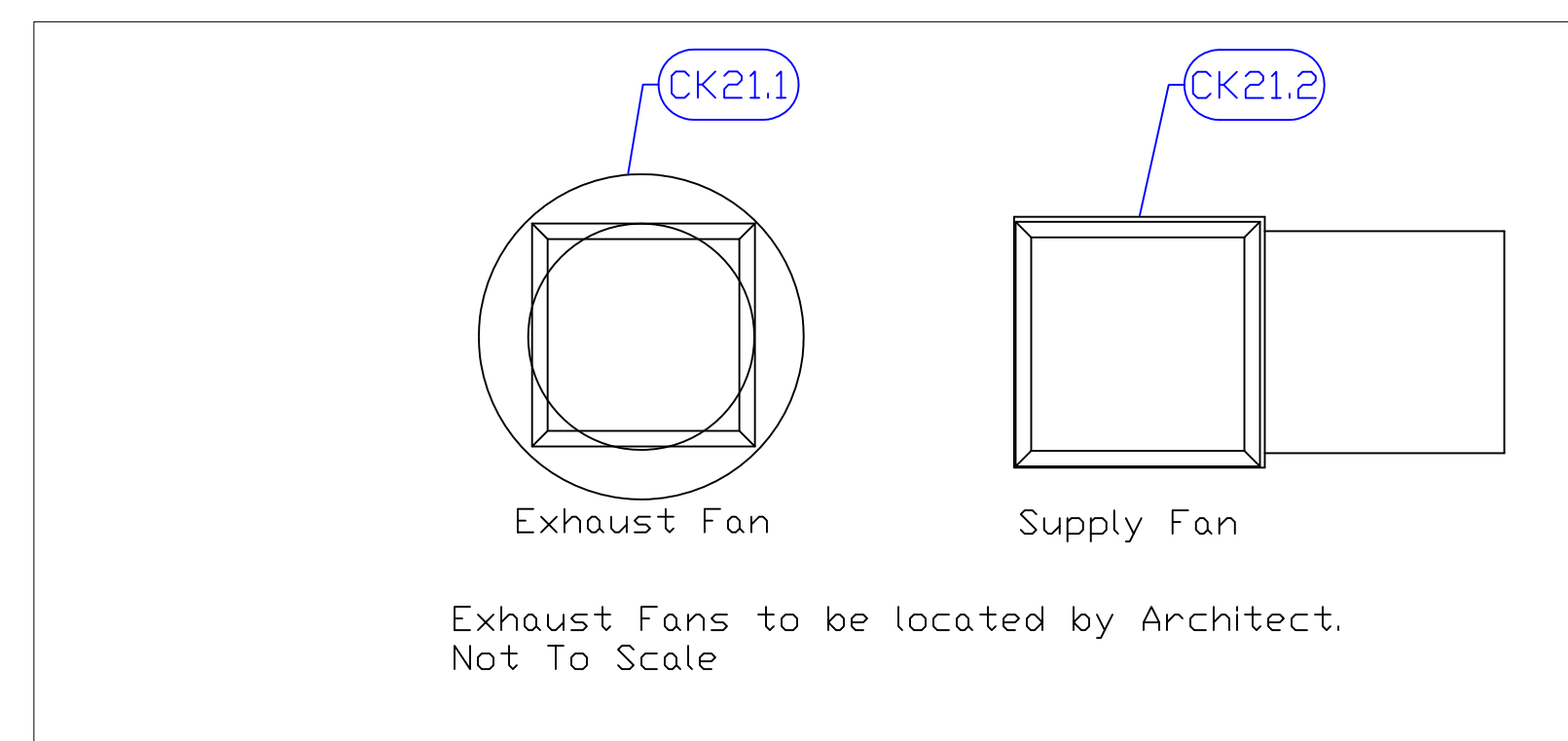
Uni-Source Supply
International Inc.
2055 W 73rd Street, Miami, FL 33016
Ph: (305)826-8696 Fax: (305)826-9131

	Preliminary Layout	
1	Added MEP Details	11-11-14
2	Changes from 12-9-14 Meeting	12-5-14
3	Changes to Fans after 12-12-14 meeting	12-11-14
4	Changes to Fans after 12-12-14 meeting	12-12-14
No.	Revision/Issue	Date

Date
Dec 12, 2014
Drawn By
Dayne Gauntlett
Scale
1/2" = 1'0"

Sheet
MK-2

CONDITIONS SCHEDULE							
Item No.	Description	Exhaust (L x W)	Exhaust (CFM)	Supply (L x W)	Makeup (CFM)	QTY	Conditions Remarks
K21	WALL HOOD	10"X19"		12"X28"		1	
K21.1	EXHAUST FAN	21"X21"	2021			1	
K21.2	SUPPLY FAN		1617	13.25"X11.5"		1	
K22	DISHTABLE SORTING SHELF					2	SEE NOTE M9
K23	SHELVING, WALL-MOUNTED					2	SEE NOTE M9



LEGEND - MECHANICAL

- EXHAUST DUCT COLLAR
- SUPPLY DUCT COLLAR
- INWALL BACKING FOR WALL SHELVES
- RECESSED FLOOR
- RAISED EQUIPMENT PAD

NOTE # M5
ALL NATIONAL, STATE, AND LOCAL CODES SHALL APPLY

NOTE # M6
ARCHITECT OR ENGINEER TO SIZE AND LOCATE, CONTRACTOR TO PROVIDE ALL OPENINGS FOR DUCTS, PLUMBING LINES, ELECTRICAL LINES, AND REFRIGERATION LINES, AS REQUIRED BY EQUIPMENT.

NOTE # M7
SUPPLY FANS TO BE LOCATED A MINIMUM OF 10' FROM EXHAUST FANS.

NOTE # M8
SHOP DRAWING WILL BE PROVIDED BY MANUFACTURER FOR HOOD, EXHAUST FANS, & SUPPLY FANS, UNCE ORDER IS PLACE WITH.

NOTE # M9
GENERAL CONTRACTOR TO PROVIDE 2" PLYWOOD WALL BACKING FROM 48" TO 78" AFF FOR ALL WALL MOUNTED EQUIPMENT.

NOTE # M10
CEILING HEIGHTS TO BE VERIFIED FOR SUFFICIENT CLEARANCE FOR EQUIPMENT.

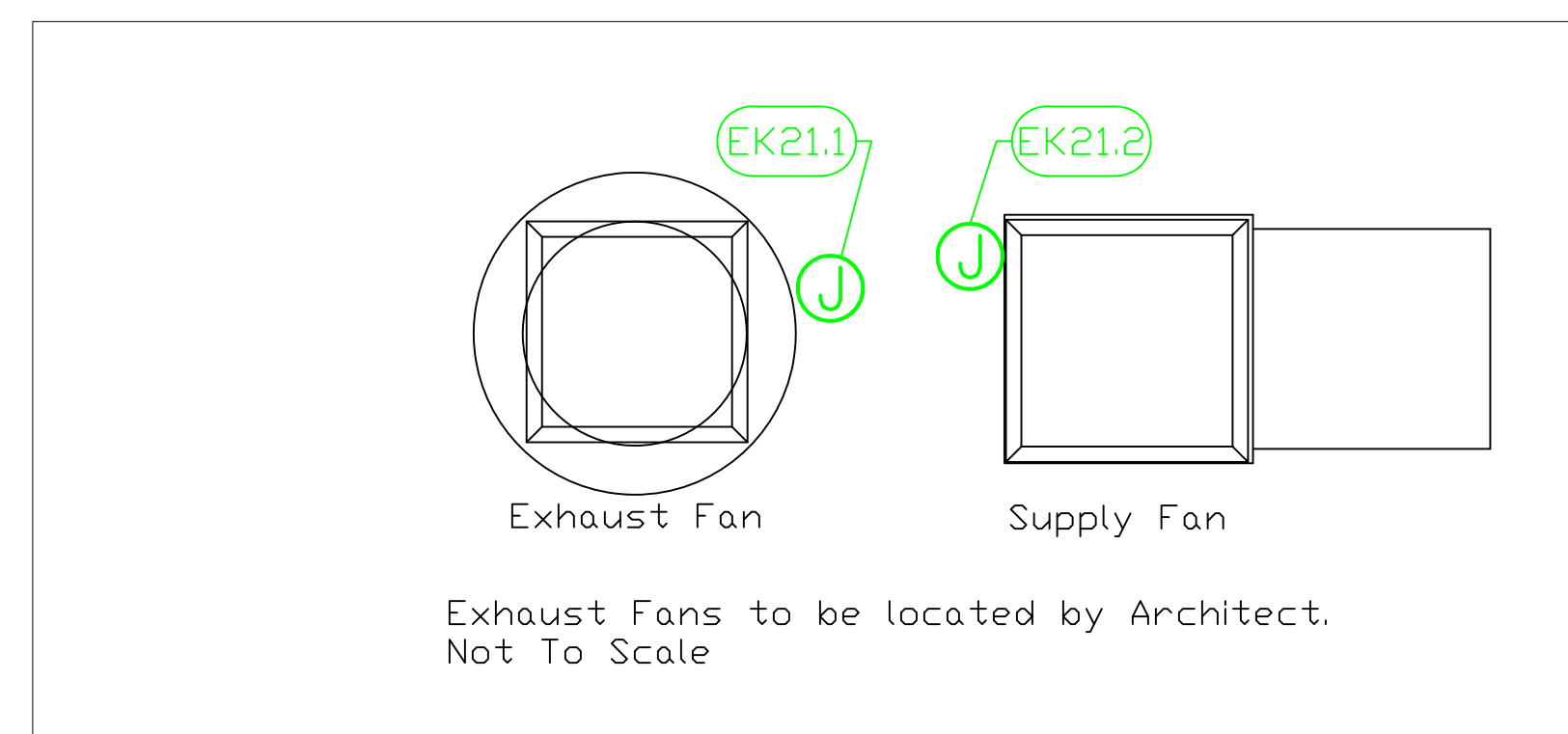
NOTE # M11
REFRIGERATION CONTRACTOR TO HANG EVAPORATORS FOR WALK-IN, RUN & CHARGE LINES BETWEEN EVAP. & CONDENSING UNIT.

Equipment MECHANICAL Service Requirements

All Dimensions to be verified on the job site. Actual locations for floor drains, and any ventilating equipment to be determined by Engineer. Mechanical, Plumbing & Electrical to be checked and verified by Customers MEP Engineer. Remote Condensing Units to be located by Architect. Exhaust & Supply fans to be located by Architect.

Sail Rock
Great House Kitchen & Bar
South Caicos

ELECTRICAL SCHEDULE												
ITEM No.	DESCRIPTION	VOLTS	CYCLE	PHASE	AMPS	HP	NEMA	EQUIP. AFF	CONNECTION	ROUGH-IN AFF	QTY	ELECTRICAL REMARKS
B1	BOTTLE COOLER	120	60	1	5.8	1/4	5-15P	8"	SIMPLEX	18"	1	
B2	REFRIGERATED BACKBAR CABINET	120	60	1	6.5	1/4	5-15P	8"	SIMPLEX	18"	1	
B3	ICE CUBER	115	60	1	9.7			75"	SIMPLEX	72"	1	NO CORD SUPPLIED
B8	BLENDER STATION	120	60	1	15			20"	SIMPLEX	14"	1	NO CORD SUPPLIED
K1	REACH-IN REFRIGERATOR	115	60	1	7.6	1/3	5-15P	7.0"	SIMPLEX	18"	1	
K1.1	REACH-IN FREEZER	115	60	1	7.2	1/3	5-15P	7.0"	SIMPLEX	18"	1	
K5	DISHWASHER, UNDERCOUNTER	208	60	1	38.8	3/4		11.5"	DISCONNECT	18"	1	DISCONNECT FOR WET AREAS
K7	REFRIGERATED SANDWICH UNIT	115	60	1	8.6	1/3	5-15P	8"	SIMPLEX	18"	1	
K9	REACH-IN UNDERCOUNTER FREEZER	115	60	1	4.8	1/3	5-15P	8"	FLOOR	0"	1	FLOOR RECEPTACLE
K10	MICROWAVE OVEN	208	60	1	16.6		6-20P	48"	SPECIAL	48"	1	2 POLE, 3 WIRE
K17	WORK TABLE	115	60	1	15			48"	DUPLEX	48"	1	CONVENIENCE OUTLET, SEE NOTE E1
K21	WALL HOOD	115	60	1	15			108"	J-BOX	108"	1	ELEC. FOR LIGHTS IN HOOD
K21.1	EXHAUST FAN	115	60	1	13	3/4		roof	J-BOX	roof	1	ELEC. AT HOOD CONTROL BOX
K21.2	SUPPLY FAN	115	60	1	11	3/4		ceiling	J-BOX	ceiling	1	ELEC. AT HOOD CONTROL BOX



- LEGEND - ELECTRICAL CONNECTIONS**
- DUPLEX RECEPT., 15-AMP, 120-VOLT, GROUND TYPE, HORIZONTAL MOUNT
 - SIMPLEX RECEPT., 120-VOLT, GROUND TYPE, HORIZONTAL MOUNT
 - SPECIAL PURPOSE OUTLET, GROUND TYPE, HORIZONTAL MOUNT
 - JUNCTION BOX, DIRECT CONNECTION
 - DISCONNECT SWITCH, DIRECT CONNECTION
 - FLOOR/CEILING RECEPTACLE AS INDICATED
 - (2) Telephone + (2) Data
 - FIELD CONNECTIONS
 - HARD WIRE CONNECTION POINT AT MACHINE

NOTE # E1
TYPICAL OUTLETS IN WALL ABOVE TABLE, BY ELECTRICIAN NOT TO SCALE

NOTE # E2
ALL NATIONAL, STATE, AND LOCAL CODES SHALL APPLY

NOTE # E3
ALL ELECTRICAL CONNECTIONS AND HARDWARE REQUIRED TO BE PROVIDED BY ELECTRICAL CONTRACTOR

NOTE # E4
ALL JUNCTION BOXES, OUTLETS, ETC. TO BE LOCATED SO AS TO NOT INTERFERE WITH EQUIPMENT

NOTE # E5
ALL RELAYS, CONTRACTORS, STARTERS, AND SWITCHES REQUIRED FOR EXHAUST & SUPPLY FANS TO BE PROVIDED BY ELECTRICAL CONTRACTOR UNLESS SPECIFIED

NOTE # E6
ELECTRICAL CONTRACTOR TO INTERCONNECT DISHMACHINE TO EXHAUST FAN FOR DISHMACHINE SO THAT THE FAN RUNS WHEN THE DISHMACHINE IS IN OPERATION.

NOTE # E7
ELECTRICAL CONTRACTOR TO INSTALL TABLE LIMIT SWITCH TO END OF CLEAN DISHTABLE TO THAT MACHINE STOPS WHEN SWITCH IS DEPRESSED.

NOTE # E8
ELECTRICAL CONTRACTOR TO CONNECT DRAIN LINE HEATER, PAN HEATER AND DDOR HEATER FOR WALK-IN FREEZER.

Equipment ELECTRICAL Service Requirements

All Dimensions to be verified on the job site. Actual locations for floor drains, and any ventilating equipment to be determined by Engineer. Mechanical, Plumbing & Electrical to be checked and verified by Customers MEP Engineer. Remote Condensing Units to be located by Architect. Exhaust & Supply fans to be located by Architect.

Uni-Source Supply
 International Inc.
 2055 W 73rd Street, Miami, FL 33016
 Ph: (305)826-8696 Fax: (305)826-9131

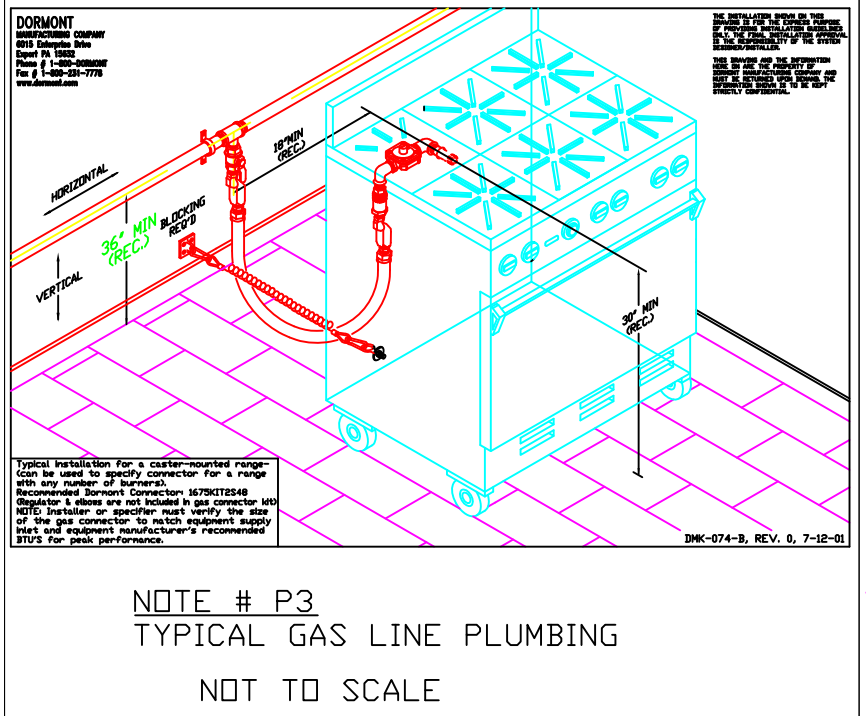
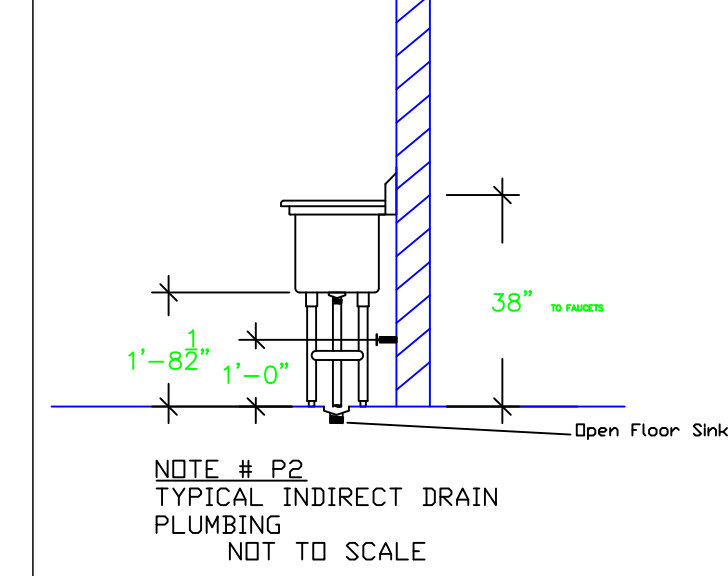
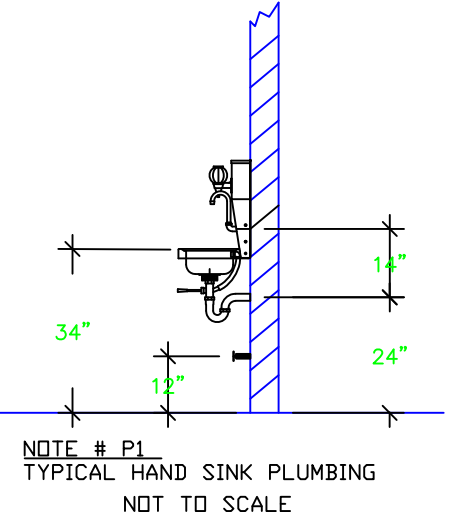
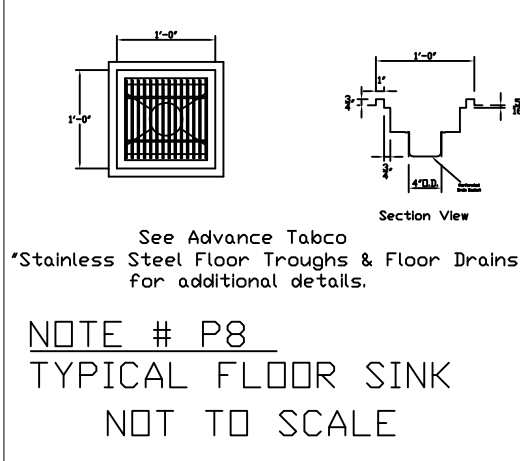
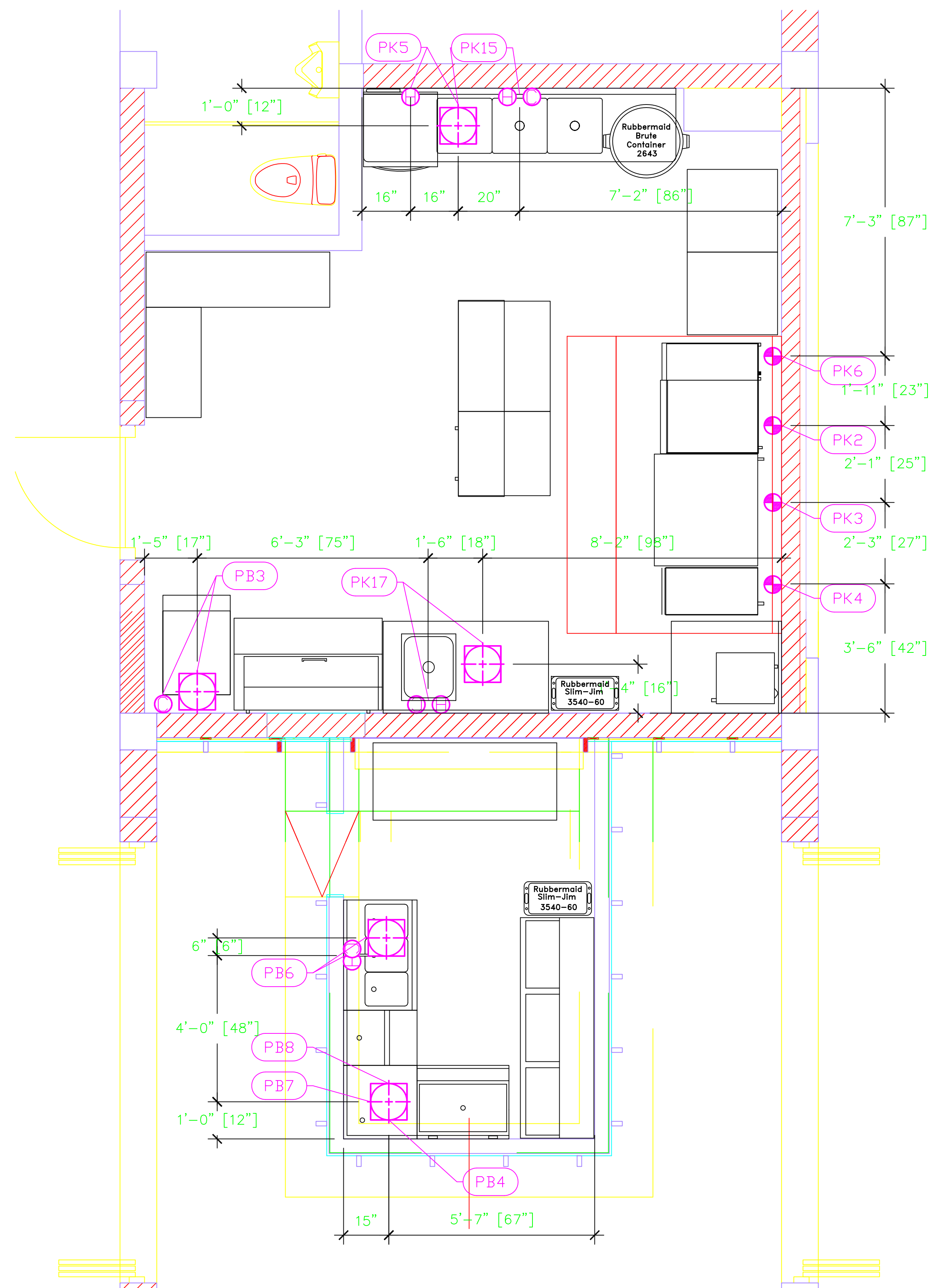
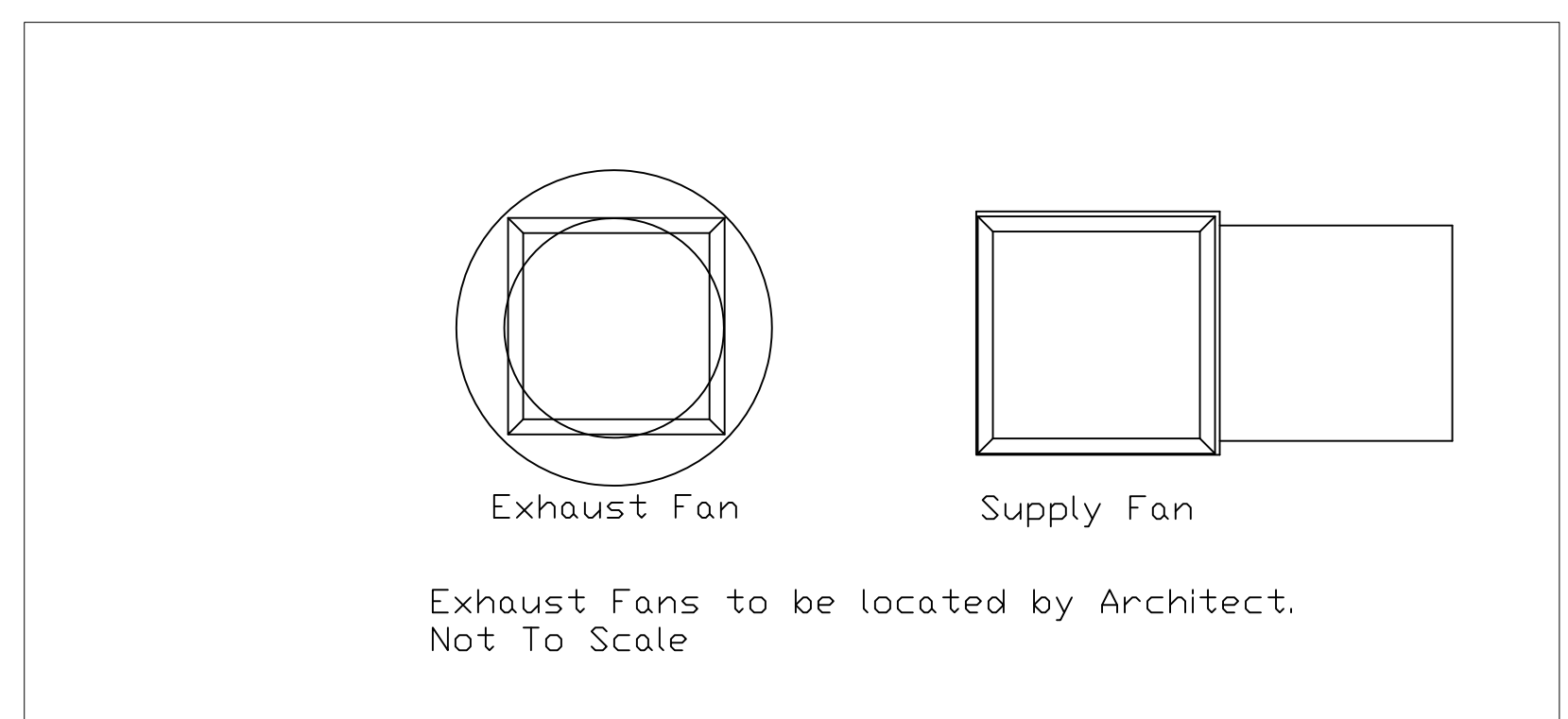
No.	Revision/Issue	Date
1	Preliminary Layout	11-11-14
2	Added MEP Details.	12-5-14
3	Changes From 12-9-14 Meeting	12-11-14
4	Changes to Fans after 12-12-14 meeting	12-12-14

Date
Dec 12, 2014
 Drawn By
Dayne Gauntlett
 Scale
1/2" = 1'0"

Sheet
MK-3

Sail Rock
Great House Kitchen & Bar
South Caicos

PLUMBING SCHEDULE														
ITEM No.	DESCRIPTION	Cold Water Size	Cold Water AFF	Hot Water Size	Hot Water AFF	H&C Rough-In	Direct Waste Size	Direct Waste AFF	Indirect Waste Size	Gas Size (in)	Gas Com. AFF	Gas MBTU	QTY	Plumbing Remarks
B3	ICE CUBER	1/2"	74"			78"			3/4"				1	ALSO HAS A 3/8" DEW DRAIN
B4	UNDERBAR ICE BIN								3/4"				1	
B6	UNDERBAR SINK UNITS	3/8"	30	3/8"	30"	12"			1-1/2"				1	
B7	CORNER ANGLE FILLER								1-1/2"				1	
B8	BLENDER STATION								1-1/2"				1	
K2	COUNTERTOP GRIDDLE								3/4"	36"	40.0		1	SEE NOTE P3
K3	RANGE, 36", 6 OPEN BURNERS								3/4"	36"	243.0		1	SEE NOTE P3
K4	FRYER								3/4"	36"	90.0		1	SEE NOTE P3
K5	DISHWASHER, UNDERCOUNTER			1/2"	12"	12"			1-3/8"				1	
K6	COUNTERTOP HOTPLATE								3/4"	36"	66		1	SEE NOTE P3
K15	THREE (3) COMPARTMENT SINK	1/2"	36"	1/2"	36"	12"			(3) 1-1/2"				1	(1) SET OF 1/2" FAUCET HOLES, 8" OC
K17	WORK TABLE	1/2"	36"	1/2"	36"	12"			1-1/2"				1	



- LEGEND -- PLUMBING CONNECTIONS**
- ○ HW-HOT WATER, OR CW-COLD WATER
 - GAS
 - WASTE, DIRECT-CONNECTED
 - FLOOR SINK Advance Tabco FDR-1212
 - FLOOR DRAIN Josam 30000-A3
 - FUNNEL FLOOR DRAIN Josam 30000-E3
 - FIELD CONNECTIONS
 - CONNECTION POINT AT MACHINE

NOTE # P4: ALL NATIONAL, STATE, AND LOCAL CODES SHALL APPLY

NOTE # P5: ALL PLUMBING CONNECTIONS TO BE EXTENDED AND INTERCONNECTED TO EQUIPMENT AND ALL HARDWARE REQUIRED TO BE PROVIDED BY PLUMBING CONTRACTOR

NOTE # P6: PLUMBING CONTRACTOR TO VERIFY THAT ALL EQUIPMENT IS INSTALLED WITH THE APPROPRIATE GAS PRESSURE AND REGULATORS

NOTE # P7: ALL WASTE LINES AND CONDENSATE LINES TO BE EXTEND FROM EQUIPMENT TO FLOOR DRAINS BY PLUMBING CONTRACTOR.

Equipment PLUMBING Service Requirements

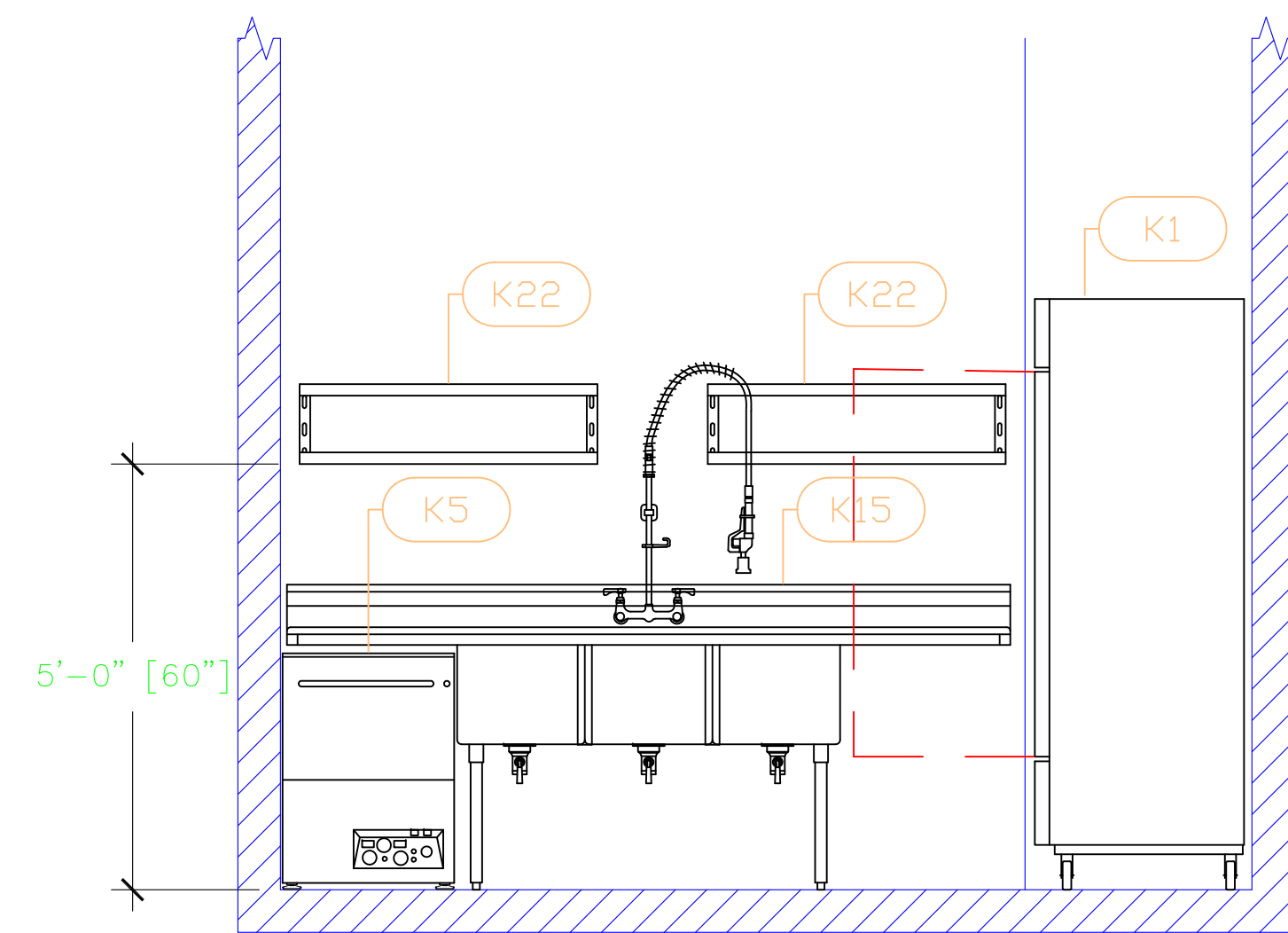
All Dimensions to be verified on the job site. Actual locations for floor drains, and any ventilating equipment to be determined by Engineer. Mechanical, Plumbing & Electrical to be checked and verified by Customers MEP Engineer. Remote Condensing Units to be located by Architect. Exhaust & Supply fans to be located by Architect.

Uni-Source Supply
International Inc.
2055 W 73rd Street, Miami, FL 33016
Ph: (305)826-8696 Fax: (305)826-9131

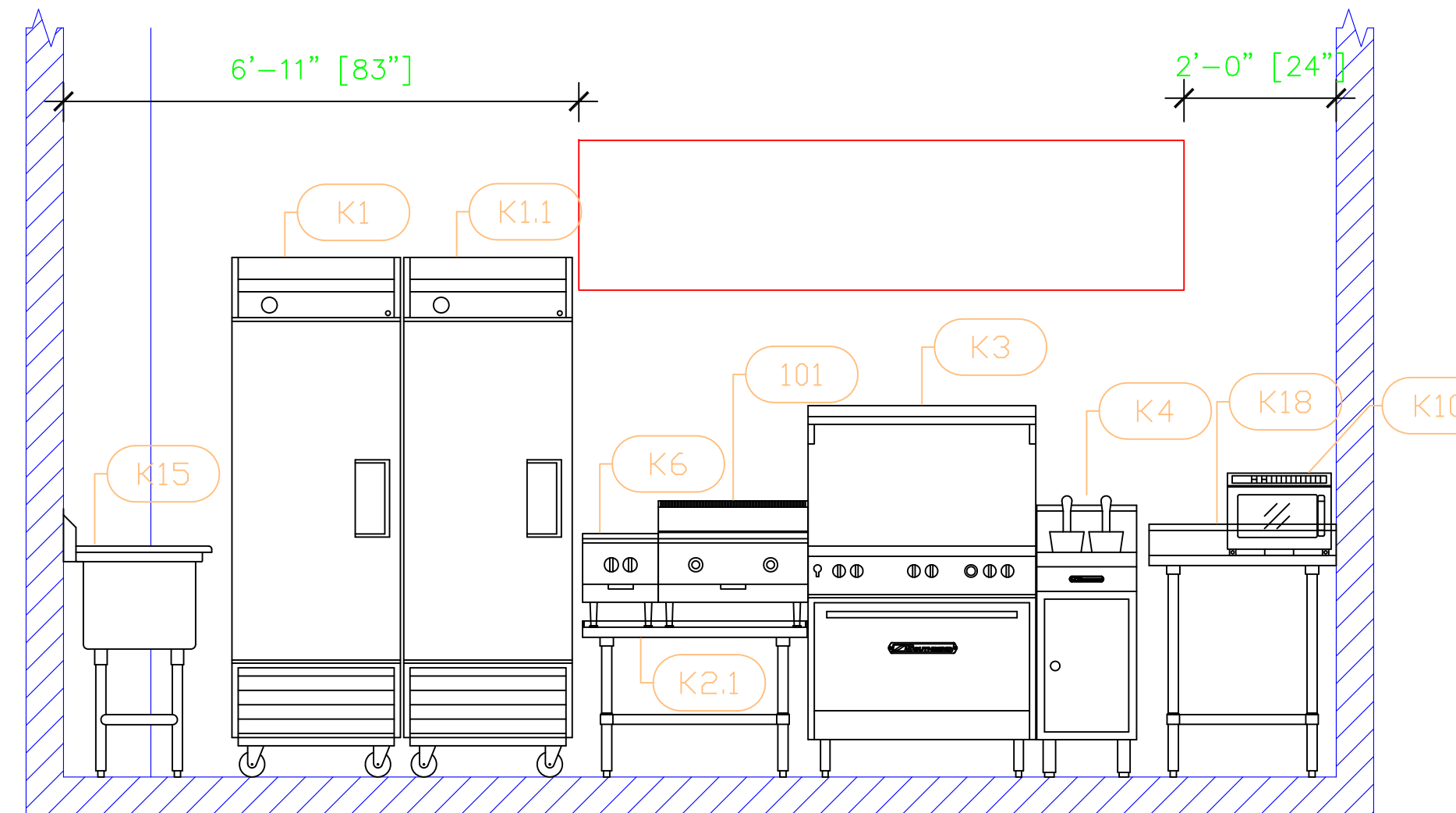
No.	Revision/Issue	Date
1	Preliminary Layout	11-11-14
2	Added MEP Details.	12-5-14
3	Changes From 12-9-14 Meeting	12-11-14
4	Changes to Fans after 12-12-14 meeting	12-12-14

Date
Dec 12, 2014
Drawn By
Dayne Gauntlett
Scale
1/2" = 1'0"

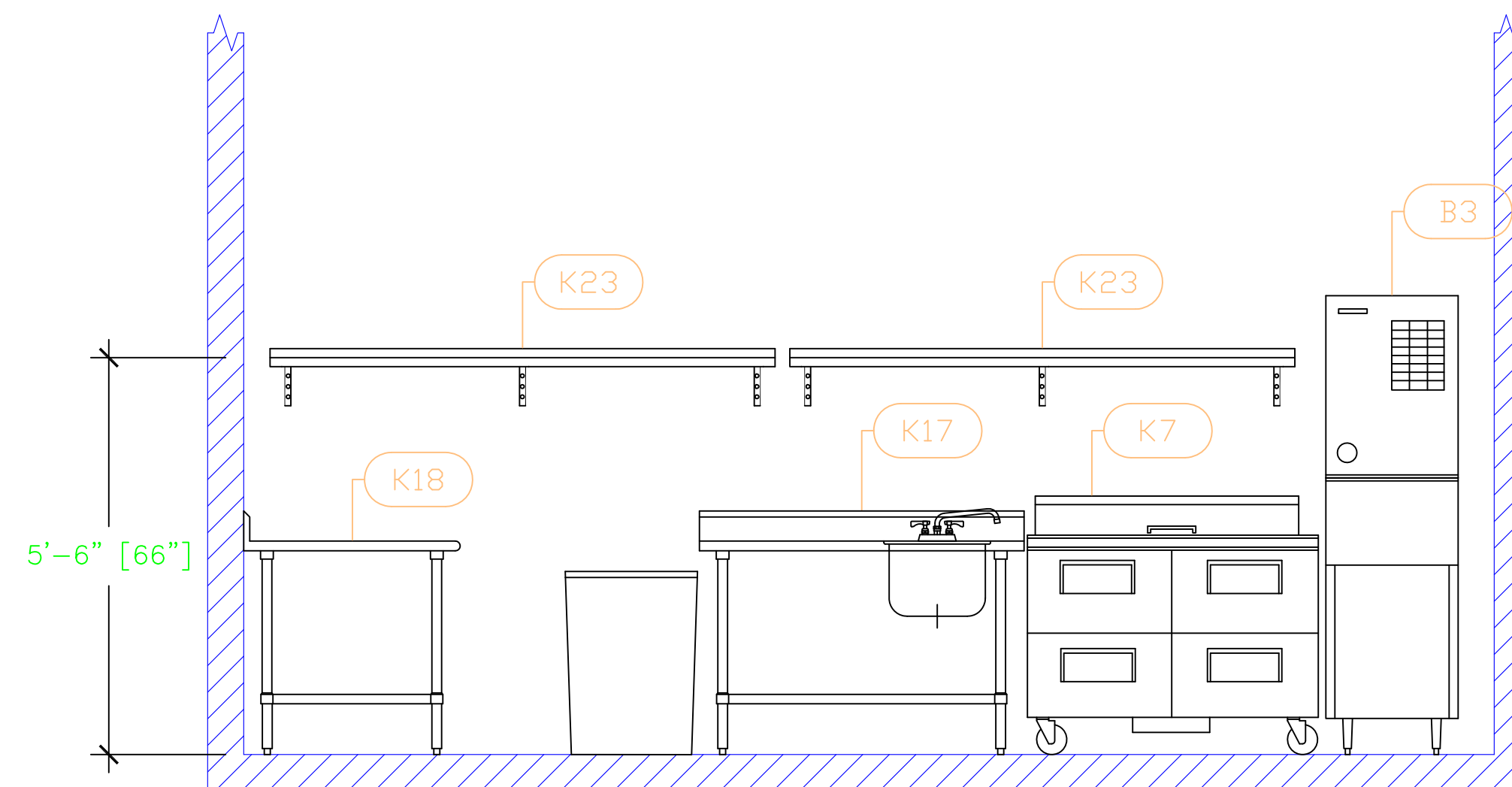
Sheet
MK-4



Plan North Kitchen Elevation



Plan Right Kitchen Elevation



Plan South Kitchen Elevation

Sail Rock
Great House Kitchen & Bar
South Caicos

Uni-Source Supply
International Inc.
2055 W 73rd Street, Miami, FL 33016
Ph: (305)826-8696 Fax: (305)826-9131

No.	Revision/Issue	Date
1	Preliminary Layout	11-11-14
2	Added MEP Details.	12-5-14
3	Changes from 12-9-14 Meeting	12-11-14
4	Changes to Fans after 12-12-14 meeting	12-12-14

Date
Dec 12, 2014
Drawn By
Dayne Gauntlett
Scale
1/2" = 1'

Sheet
MK-5

HOOD INFORMATION - Job#2184169

HOOD NO.	TAG	MODEL	LENGTH	EXHAUST PLENUM (RISERS)				TOTAL SUPPLY CFM	HOOD CONSTRUCTION	END TO END	HOOD CORRUG.	
				MAX. COOKING TEMP.	TOTAL EXH. CFM	WIDTH	LENG.					DIA.
1		5424 ND-2-PSP-F	8' 1.00"	450 Dfg	2021	10"	19"	2021	-0.460"	1617	430 SS	ALDNE

HOOD INFORMATION

HOOD NO.	TAG	TYPE	FILTER(S)			EFFICIENCY @ 9 MICRONS	LIGHT(S)			V/R GUARD	LOCATION	FIRE SYSTEM	ELECTRICAL	SWITCHES	FIRE SYSTEM HANGING PIPING	HOOD WGT
			QTY	HEIGHT	LENGTH		QTY	TYPE								
1		SS Baffle with Handles	6	16"	16"	30%	3	L55 Series E26	NO						YES	430 LBS

HOOD OPTIONS

HOOD NO.	TAG	OPTION
1		BACKSPASH 80.00" High X 97.00" Long 430 SS

PERFORATED SUPPLY PLENUM(S)

HOOD NO.	TAG	POS.	LENGTH	WIDTH	HEIGHT	TYPE	RISERS		
							WIDTH	LENG.	DIA.
1		Front	97"	16"	6"	MUA	12"	28"	805 0.241"
						MUA	12"	28"	805 0.241"

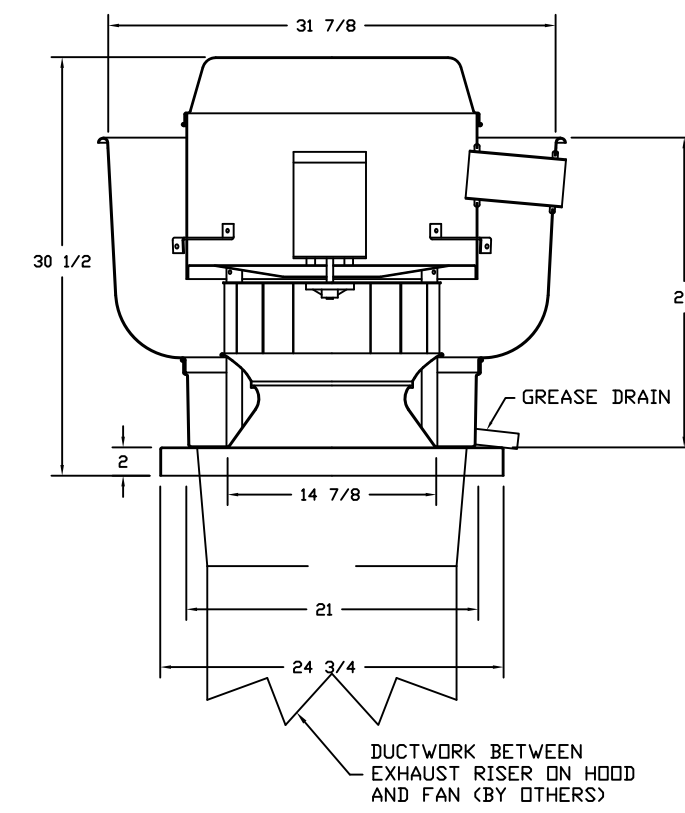
EXHAUST FAN INFORMATION - Job#2184169

FAN UNIT NO.	TAG	FAN UNIT MODEL #	CFM	ESP.	RPM	H.P.	B.H.P.	#	VOLT	FLA	WEIGHT (LBS.)	SDNES
1		DUBSHFA	2021	1.000	1407	0.750	0.5530	1	115	13.0	81	16.7

MUA FAN INFORMATION - Job#2184169

FAN UNIT NO.	TAG	FAN UNIT MODEL #	BLOWER	HOUSING	CFM	ESP.	RPM	H.P.	B.H.P.	#	VOLT	FLA	WEIGHT (LBS.)	SDNES
2		INLINEIL-G10	G10	INLINE-IL	1617	0.700	944	0.750	0.5190	1	115	11.0	192	101

FAN #1 DUBSHFA - EXHAUST FAN

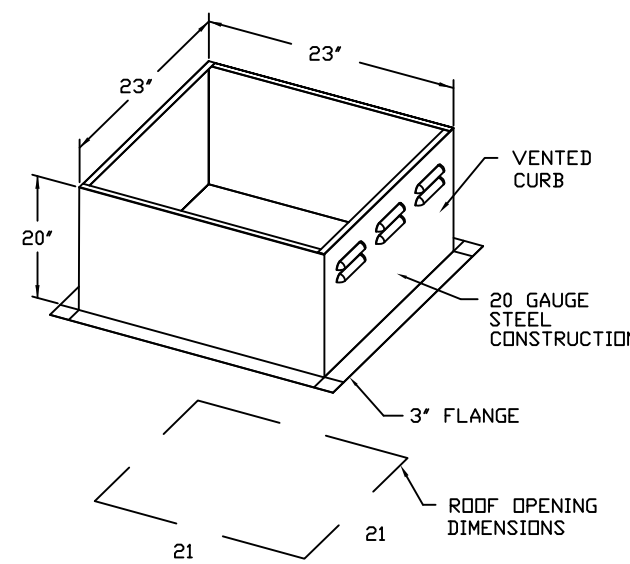


- FEATURES:**
- ROOF MOUNTED FAN
 - RESTAURANT MODEL
 - UL705 AND UL742
 - VARIABLE SPEED CONTROL
 - INTERNAL WIRING
 - WEATHERPROOF DISCONNECT
 - THERMAL OVERLOAD PROTECTION (SINGLE PHASE)
 - HIGH HEAT OPERATION 300°F (149°C)
 - GREASE CLASSIFICATION TESTING

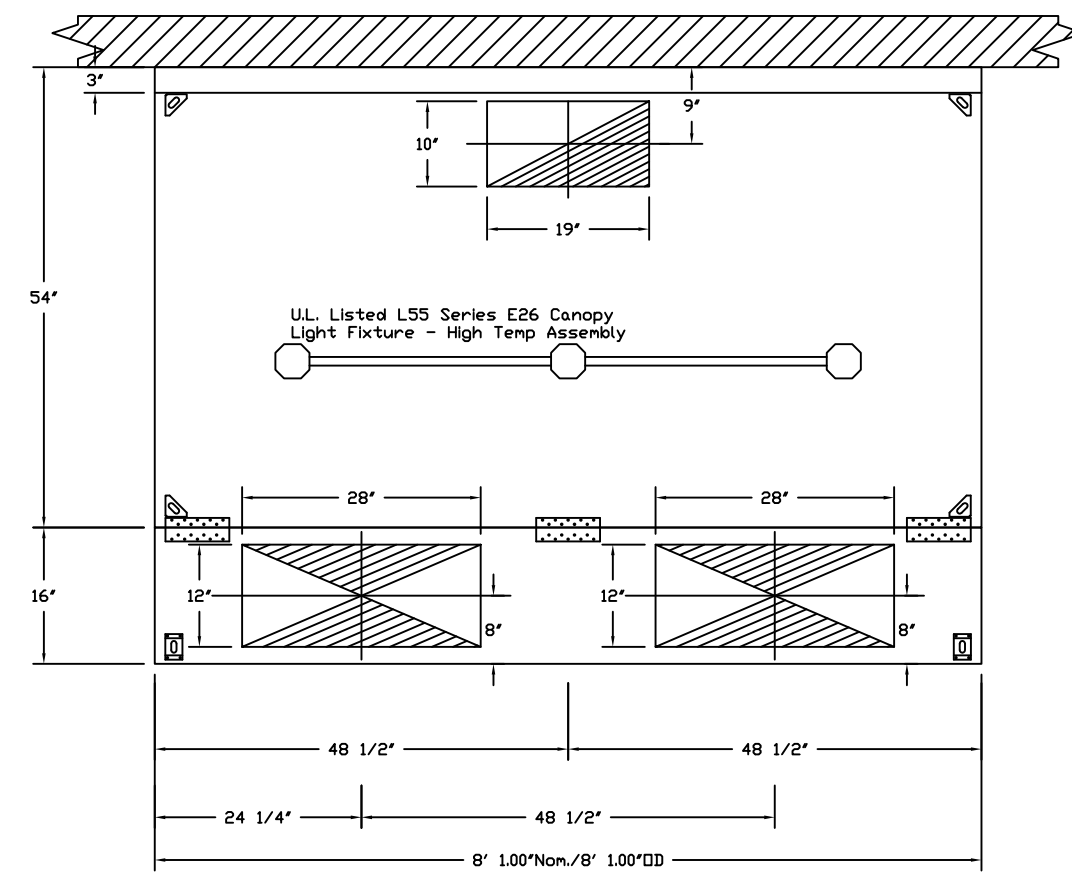
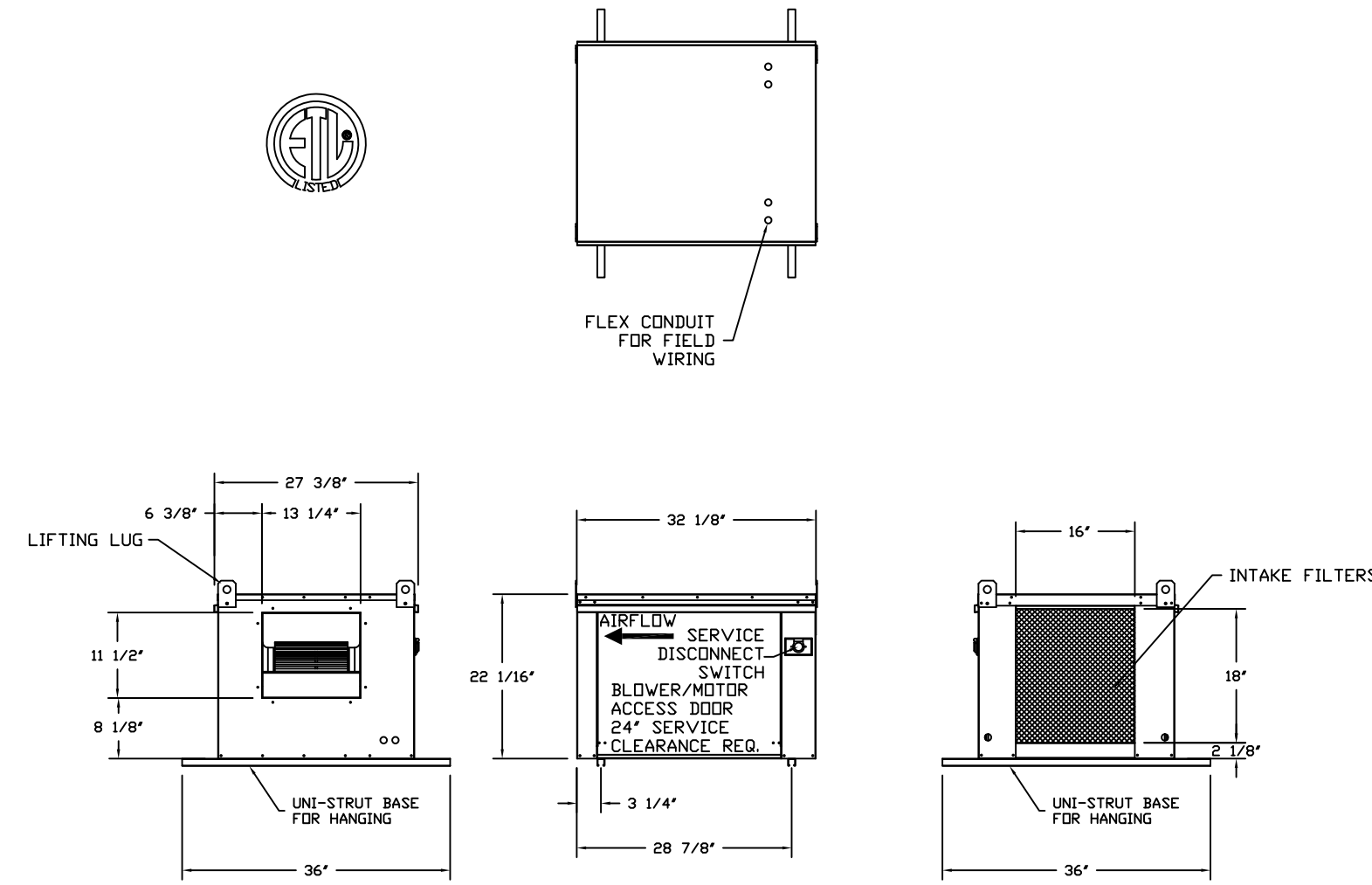
NORMAL TEMPERATURE TEST
EXHAUST FAN MUST OPERATE CONTINUOUSLY WHILE EXHAUSTING AIR AT 300°F (149°C) UNTIL ALL FAN PARTS HAVE REACHED THERMAL EQUILIBRIUM AND WITHOUT ANY DETERIORATING EFFECTS TO THE FAN WHICH WOULD CAUSE UNSAFE OPERATION.

ABNORMAL FLARE-UP TEST
EXHAUST FAN MUST OPERATE CONTINUOUSLY WHILE EXHAUSTING BURNING GREASE VAPORS AT 600°F (321°C) FOR A PERIOD OF 15 MINUTES WITHOUT THE FAN BECOMING DAMAGED TO ANY EXTENT THAT COULD CAUSE AN UNSAFE CONDITION.

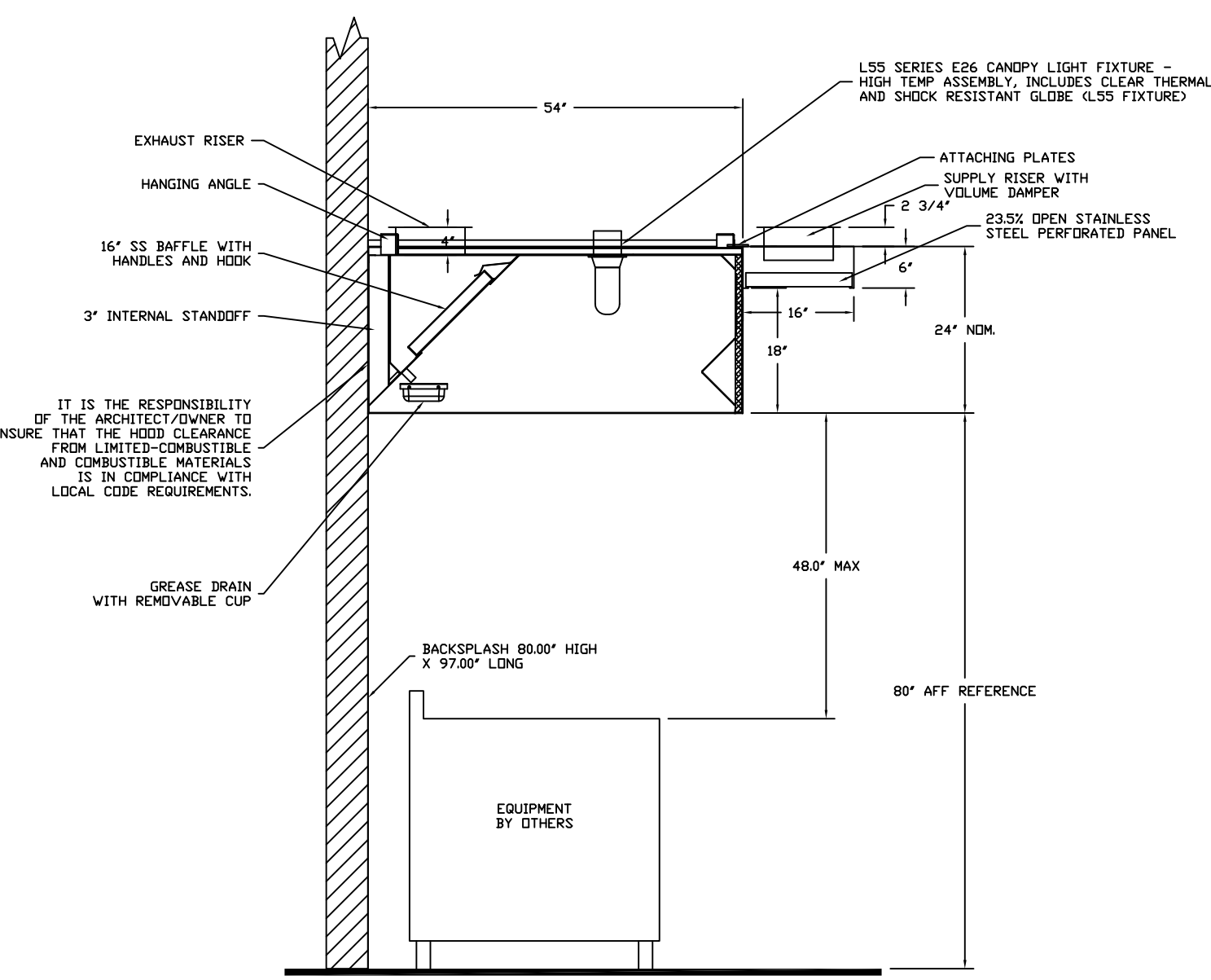
OPTIONS
GREASE BOX



FAN #2 INLINEIL-G10 - SUPPLY FAN
1. LOW PROFILE INLINE SUPPLY UNIT 1/2" VOLT BLOWER IN SIZE #1 HOUSING. INSULATED HOUSING.
2. SIDE DISCHARGE - AIR FLOW RIGHT -> LEFT
3. INSIDE HANGING GRABER FOR THE SIZE 1 UNTEMPERED INLINE UNIT. 2 HSA25 HANGING ISOLATORS PER UNI-STRUT INCLUDED.



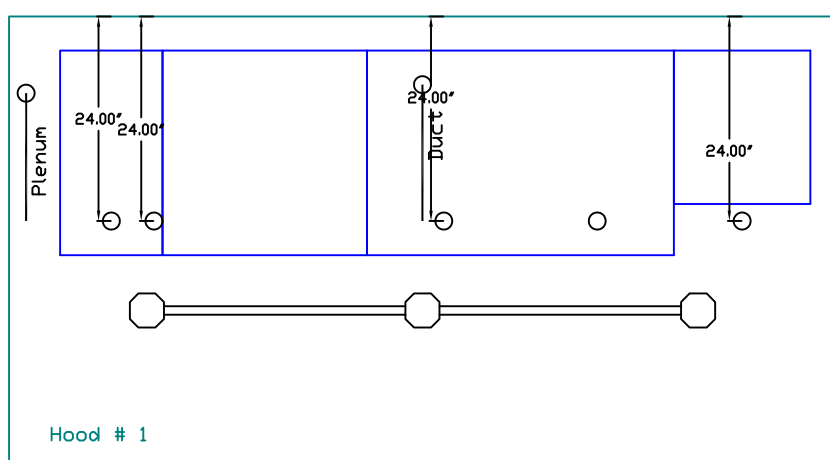
PLAN VIEW - Hood #1
8' 1.00" LONG 5424ND-2-PSP-F



SECTION VIEW - MODEL 5424ND-2-PSP-F
HOOD - #1

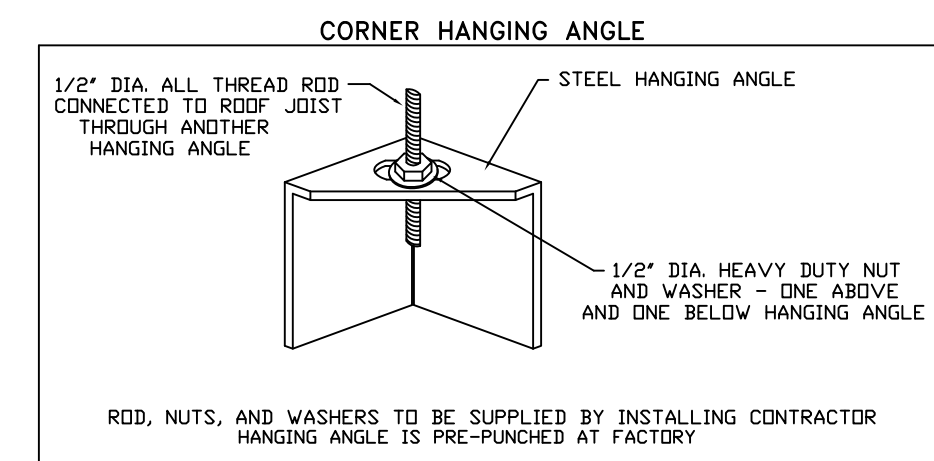
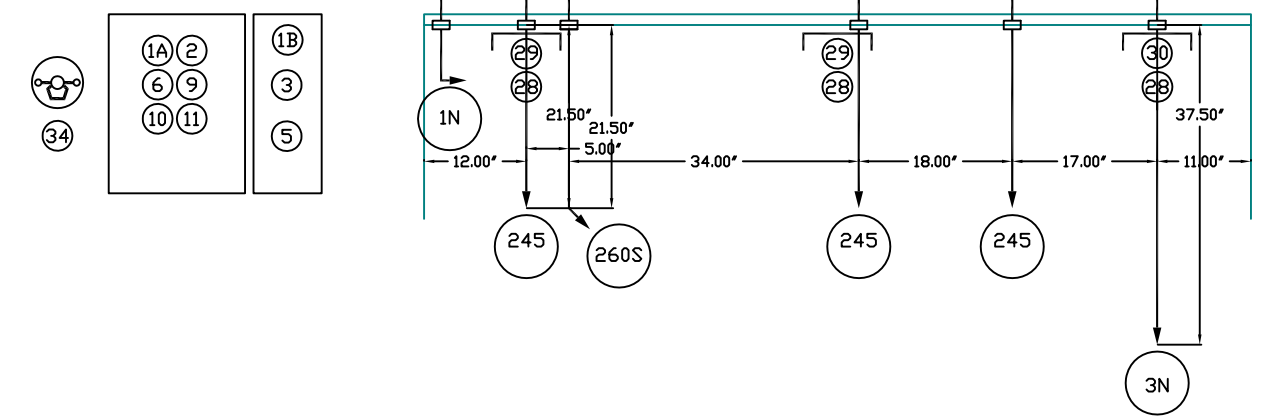
Fire System Information - Job#2184169

FIRE SYSTEM NO.	Tag	TYPE	SIZE	FLOW POINTS	INSTALLATION	
					SYSTEM	LOCATION ON HOOD
1		Ansul R102	3.0/1.5	14	Wall Mount Left	N/A



- NOTES**
- FIELD PIPE DROPS AS SHOWN
 - SLEEVING, ELBOWS, TEES, AND NOZZLES SUPPLIED BY CAS
 - RELOCATE NOZZLES IF FLOW PATTERN IS BLOCKED BY SHELVE, SALAMANDERS, ETC.
 - MAXIMUM 9 ELBOWS IN SUPPLY LINE.
 - MINIMUM 72 INCHES OF AGENT LINE FROM TANK TO FIRST NOZZLE.
 - IF APPLICABLE, PRE-PIPED CHARBROILER DRIPS ARE SHIPPED LOOSE.
 - FACTORY PIPING EXTENDS A MAXIMUM OF 6' ABOVE THE TOP OF THE HOOD.
 - APPLIANCE DIMENSIONS LISTED REPRESENT THE COOKING SURFACE SIZE, NOT THE OVERALL APPLIANCE SIZE.
 - THIS FIRE SYSTEM COMPLIES WITH UL 300 REQUIREMENTS

Job #: 2184169
Job Name: SAIL ROCK
Drawn By:
System Size: ANSUL-3.0/1.5 Total FP required: 14
Hood # 1 8' 1.00" Long x 54" Wide x 24" High
Riser # 1 Size: 10" x 19"



CAPTIVE-AIRE HOODS ARE BUILT IN COMPLIANCE WITH UL 710 AND NFPA 96 AND ARE RECOGNIZED BY ONE OR MORE OF THE FOLLOWING:

ETL SANITATION LISTED
ETL LISTED FILE# 3054804-001

REVISIONS

NO.	DESCRIPTION	DATE
1	Preliminary Layout	11-11-14
2	Added MEP Details.	12-5-14
3	Changes from 12-9-14 Meeting	12-11-14
4	Changes to Fans after 12-12-14 meeting	12-12-14
No.	Revision/Issue	Date

DATE: 12/12/2014
DWG.#: 2184169
DRAWN BY:
SCALE: 3/4" = 1'-0"
MASTER DRAWING

SHEET NO.
1

CAPTIVE-AIRE
MIAMI OFFICE
6901 Lyone Rd Suite F-4, Coconut Creek, FL 33073 PHONE: (954) 371-7627 FAX: (954) 371-7627 EMAIL: ngs@captivaire.com

Sail Rock
Great House Kitchen & Bar
South Caicos

Uni-Source Supply
International Inc.
2055 W 73rd Street, Miami, FL 33016
Ph: (305)826-8696 Fax: (305)826-9131

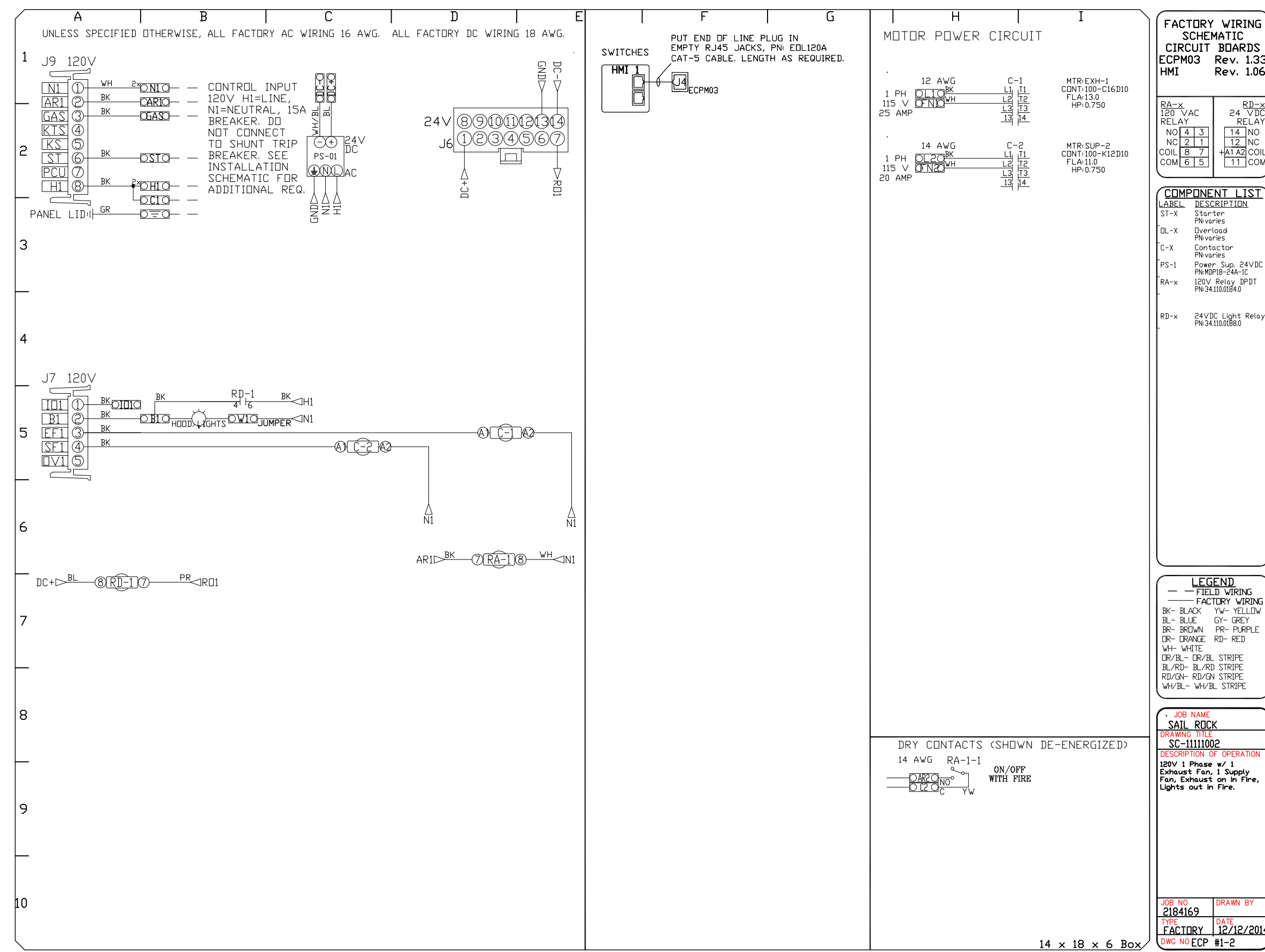
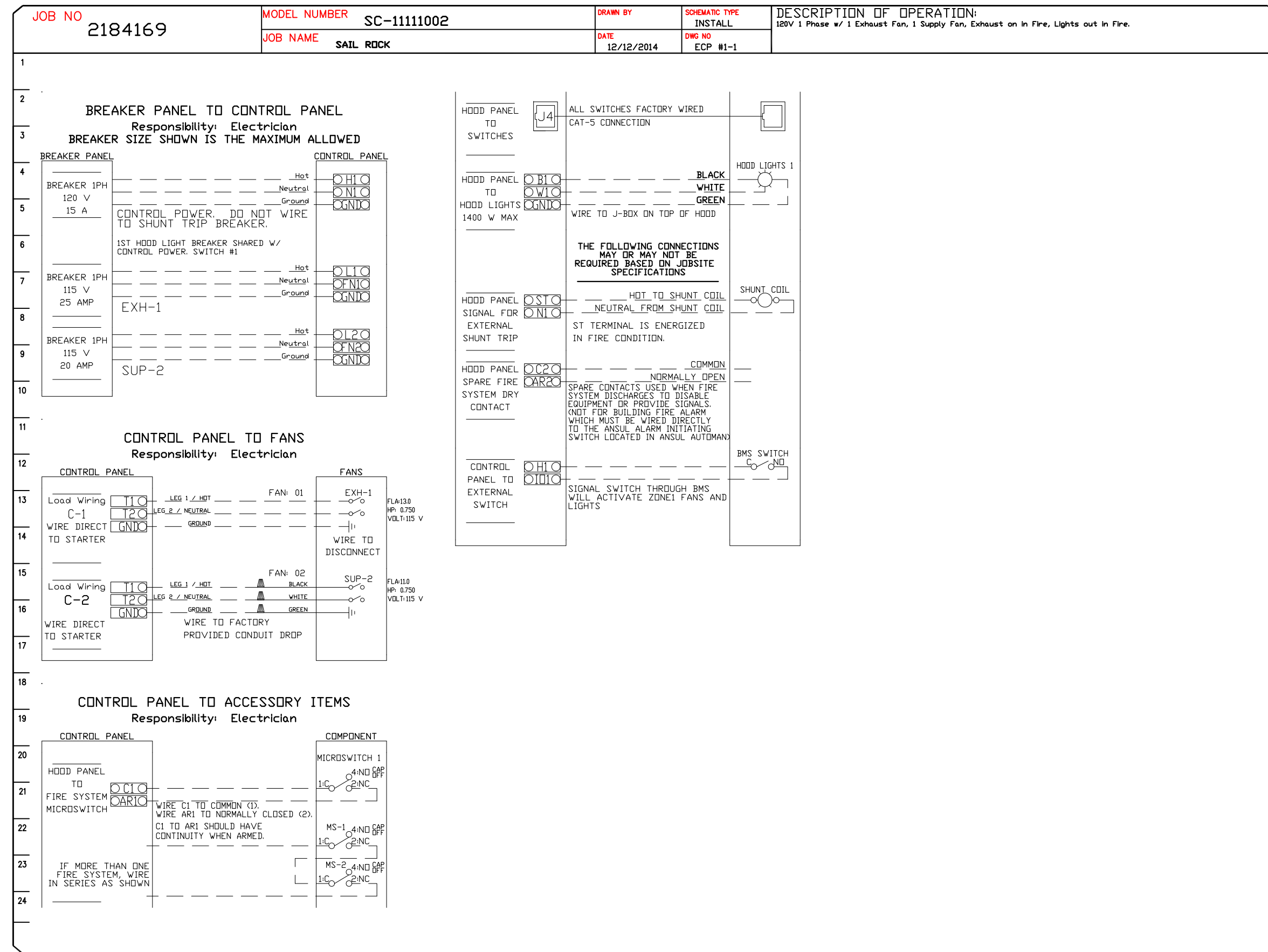
No.	Revision/Issue	Date
1	Preliminary Layout	11-11-14
2	Added MEP Details.	12-5-14
3	Changes from 12-9-14 Meeting	12-11-14
4	Changes to Fans after 12-12-14 meeting	12-12-14
No.	Revision/Issue	Date

Date
Dec 12, 2014
Drawn By
Dayne Gauntlett
Scale
NTS

Sheet
MK-6

ELECTRICAL PACKAGES - Job#2184169

NO.	TAG	PACKAGE #	LOCATION	SWITCHES		OPTION	FANS CONTROLLED									
				LOCATION	QUANTITY		TYPE	Ø	HP.	VOLTS	FLA					
1		SC-11111002	Wall Mount In SS Box	SS Wall Mount Box	1 Light											
					1 Fan	Smart Controls Basic	Exhaust	1	0.750	115	13.0	Supply	1	0.750	115	11.0



Sail Rock
Great House Kitchen & Bar
South Caicos

Uni-Source Supply
International Inc.
2055 W 73rd Street, Miami, FL 33016
Ph: (305)826-8696 Fax: (305)826-9131

SAIL ROCK
TURKS AND CAICOS

DATE: 12/12/2014
DWG #: 2184169
DRAWN BY: 2184169
SCALE: 3/4" = 1'-0"
MASTER DRAWING

SHEET NO. 2

No.	Revision/Issue	Date
1	Preliminary Layout	11-11-14
2	Added MEP Details.	12-5-14
3	Changes from 12-9-14 Meeting	12-11-14
4	Changes to Fans after 12-12-14 meeting	12-12-14

Date: Dec 12, 2014
Drawn By: Dayne Gauntlett
Scale: NTS

Sheet: MK-7