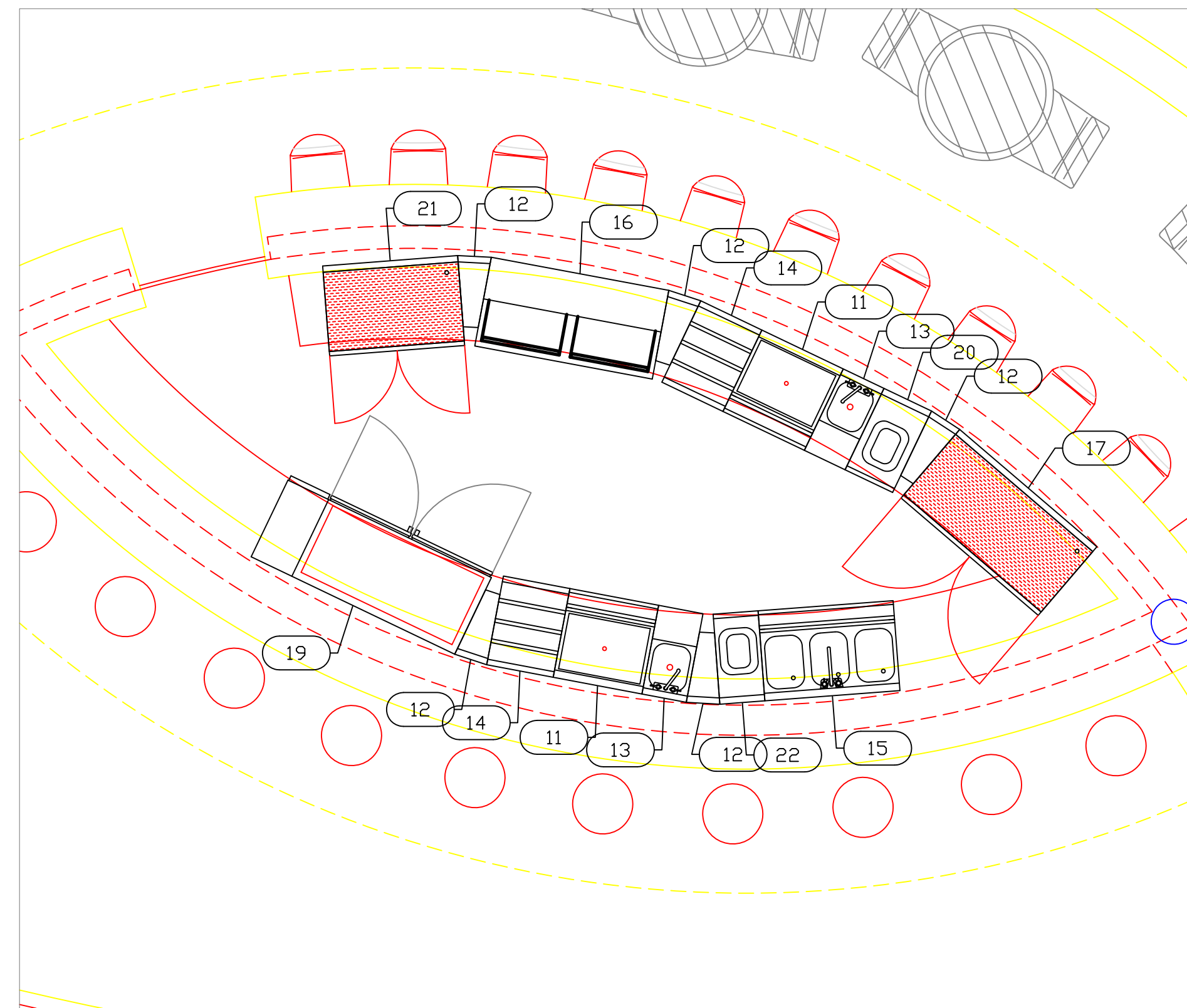
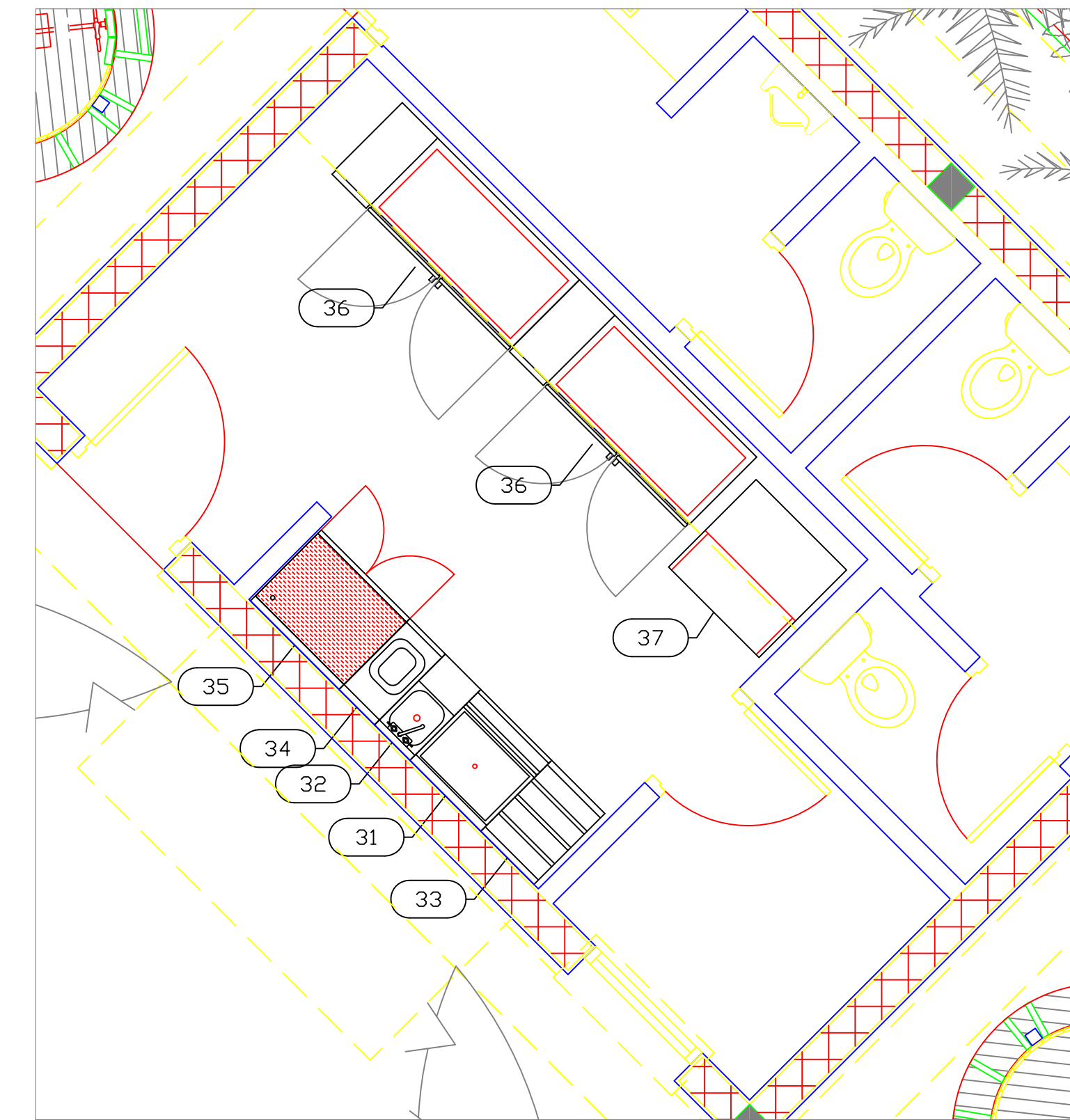


Pool



Beach



Service

EQUIPMENT SCHEDULE

ItemNo	Category	Mfr	Model	Quantity	Equipment Remarks
1	ICE BIN	KROWNE	KR18-24	1	
2	CORNER ANGLE FILLER	KROWNE	KR18-R15	4	
3	BLENDER STATION	KROWNE	KR18-12BD	1	
4	BOTTLE DISPLAY	KROWNE	KR18-12RD-LC	1	
5	UNDERBAR SINK UNITS	KROWNE	KR18-33C	1	
6	BOTTLE COOLER	KROWNE	BC24-SS	1	
7	STORAGE CABINET	KROWNE	KR18-SD24	1	
8	REFRIGERATED BACKBAR CABINET	KROWNE	BS36L	1	
9	DISHWASHER, UNDERCOUNTER	JACKSON WWS	WAREFORCE UL30	1	
11	ICE BIN	KROWNE	KR18-24	2	
12	CORNER ANGLE FILLER	KROWNE	KR18-R15	5	
13	BLENDER STATION	KROWNE	KR18-12BD	2	
14	BOTTLE DISPLAY	KROWNE	KR18-18RD-LC	2	
15	UNDERBAR SINK UNITS	KROWNE	KR18-33C	1	
16	BOTTLE COOLER	KROWNE	BC48-SS	1	
17	STORAGE CABINET	KROWNE	KR18-SD48	1	
19	REFRIGERATED BACKBAR CABINET	KROWNE	BS60R	1	
20	UNDERBAR ADD-ON UNIT	KROWNE	KR18-T14R	1	
21	STORAGE CABINET	KROWNE	KR18-SD36	1	
22	UNDERBAR ADD-ON UNIT	KROWNE	KR18-T12	1	
31	ICE BIN	KROWNE	KR18-24	1	
32	BLENDER STATION	KROWNE	KR18-12BD	1	
33	BOTTLE DISPLAY	KROWNE	KR18-18RD-LC	1	
34	UNDERBAR ADD-ON UNIT	KROWNE	KR18-T12	1	
35	STORAGE CABINET	KROWNE	KR18-SD30	1	
36	REFRIGERATED BACKBAR CABINET	KROWNE	BS60L	2	
37	ICE CUBER WITH BIN	SCOTSMAN	CU3030MA-32	1	

EQUIPMENT LAYOUT

All Dimensions to be verified on the job site.
 Actual locations for floor drains, and any ventilating equipment to be determined by Engineer.
 Mechanical, Plumbing & Electrical to be checked and verified by Customers MEP Engineer.
 Remote Condensing Units to be located by Architect.
 Exhaust & Supply fans to be located by Architect.

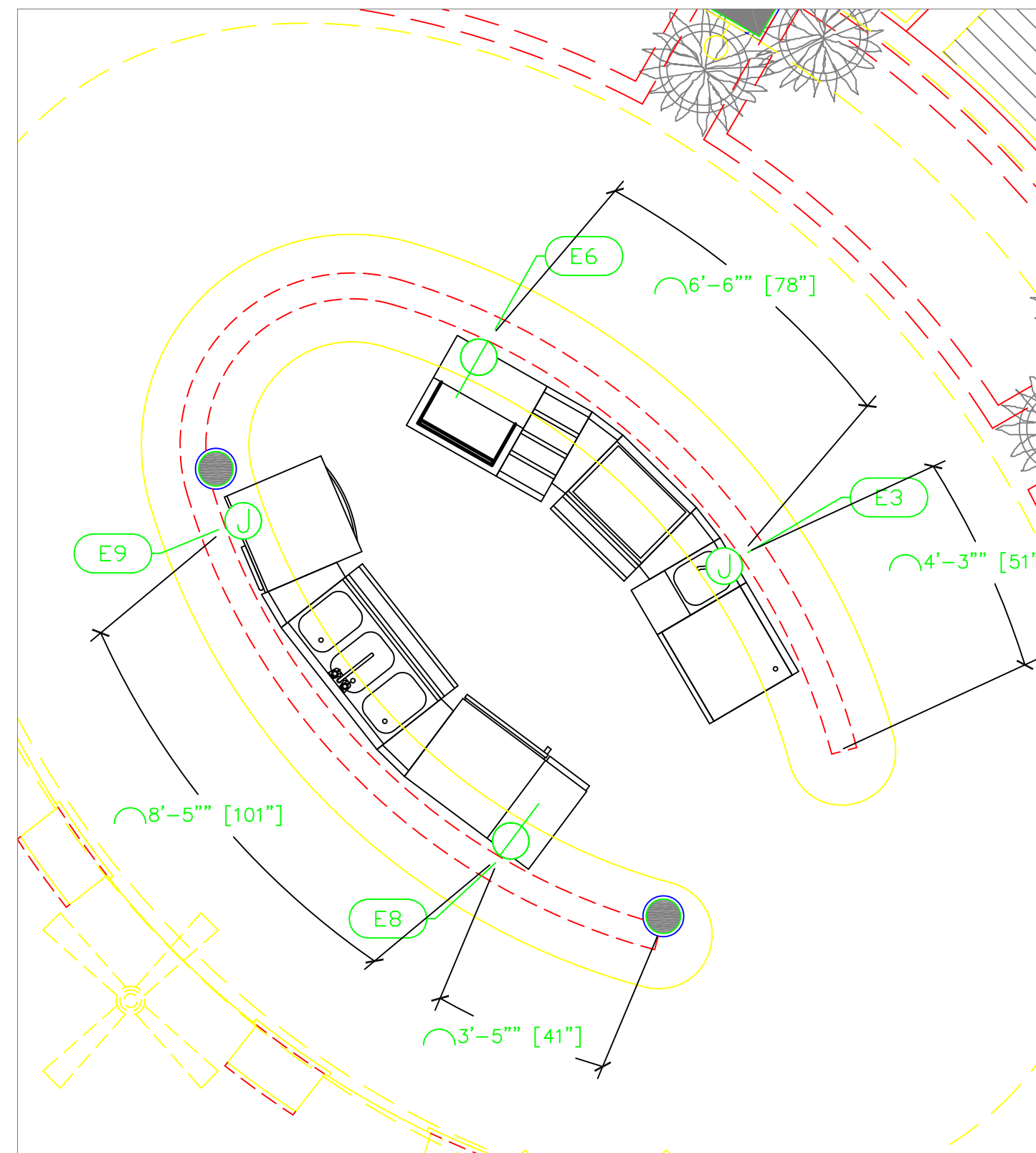
The Shore Club
Pool, Beach & Service Bars
 Providenciales, T&C

Uni-Source Supply
 International Inc.
 2055 W 73rd Street, Miami, FL 33016
 Ph: (305)826-8696 Fax: (305)826-9131

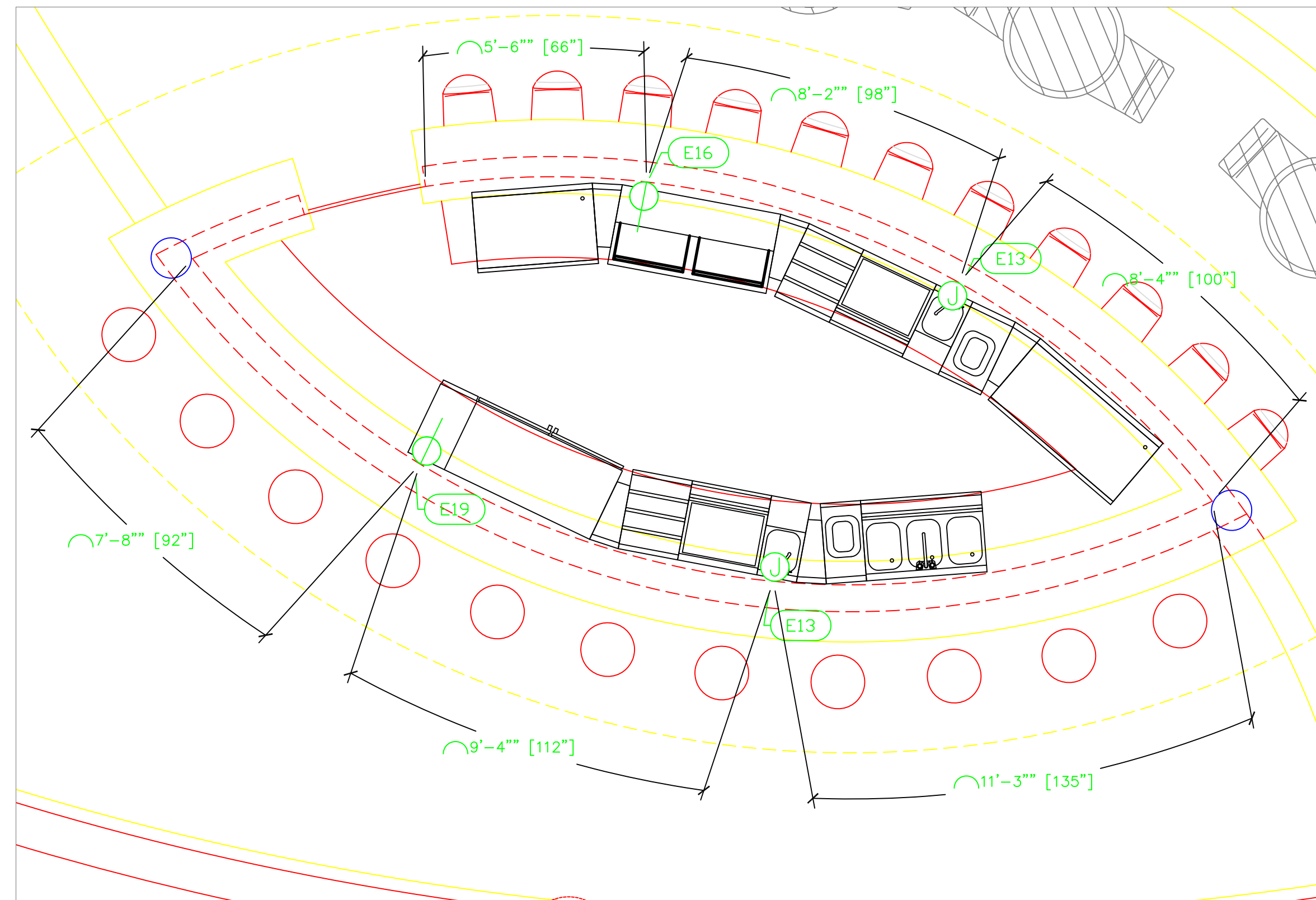
No.	Revision/Issue	Date
2	Changes based on Customer Review	6-25-15
3	Added Ice Machine to Service Bar	6-29-15
4	Updated Background, Added MEP Details	7-09-15
5	Added Factory Shop Drawings	10-08-15

Date
Oct 08 , 2015
 Drawn By
Dayne Gauntlett
 Scale
3/8" = 1'0"

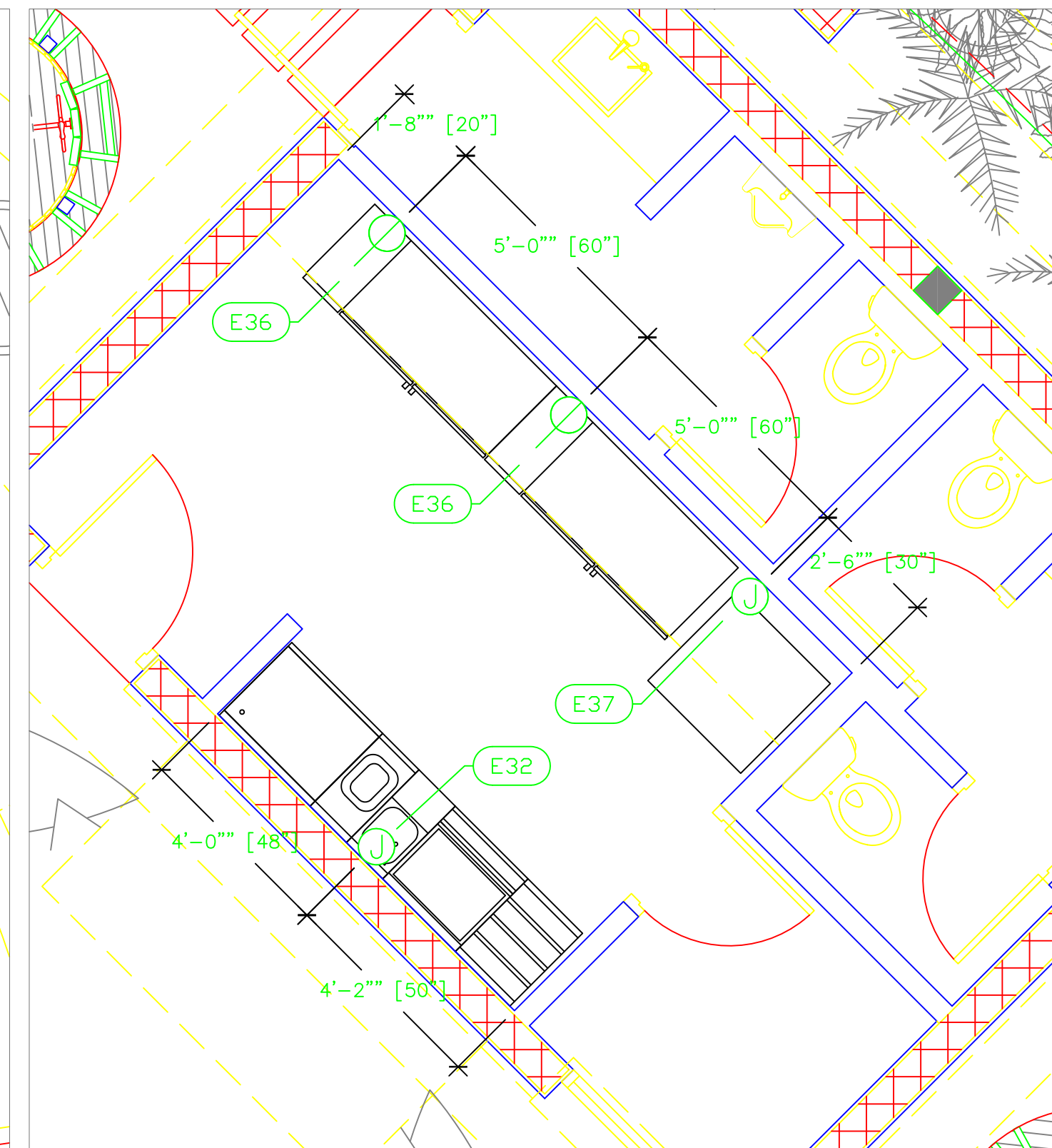
Sheet
PB-1



Pool



Beach



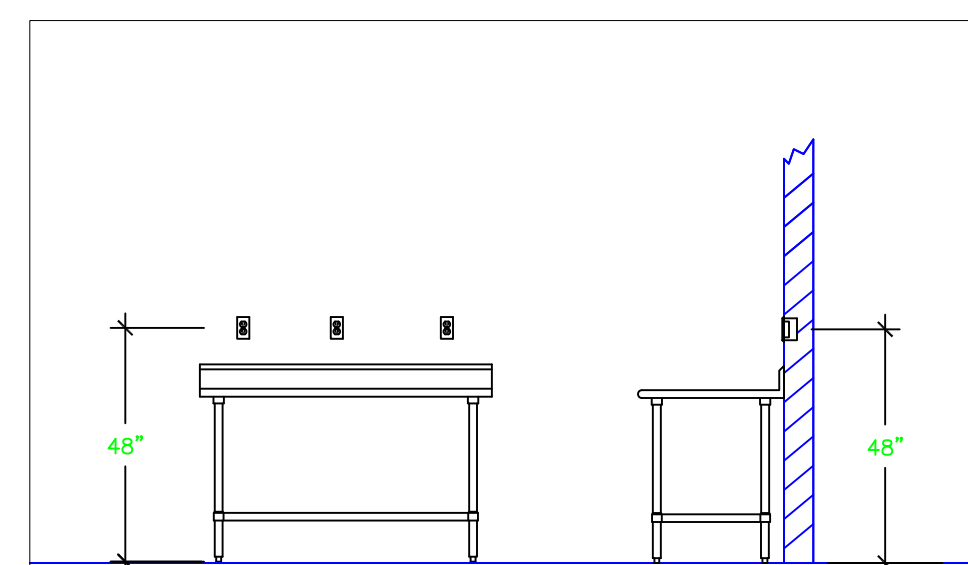
Service

ELECTRICAL SCHEDULE

ITEM No.	DESCRIPTION	VOLTS	CYCLE	PHASE	AMPS	HP	NEMA	EQUIP. AFF	CONNECTION	ROUGH-IN AFF	QTY	ELECTRICAL REMARKS
3	BLENDER STATION	115	60	1	15			18.5"	J-BOX	16"	1	INTERCONNECT WITH OUTLET ON EQUIP.
6	BOTTLE COOLER	115	60	1	4	1/5	5-15P	12"	SIMPLEX	18"	1	8' CORD, DO NOT PLUG INTO GFI OUTLET
8	REFRIGERATED BACKBAR CABINET	115	60	1	3.6	1/5	5-15P	12"	SIMPLEX	18"	1	8" CORD & PLUG
9	DISHWASHER, UNDERCOUNTER	115	60	1	13.2	3/4		11.5"	J-BOX	18"	1	
13	BLENDER STATION	115	60	1	15			18.5"	J-BOX	16"	2	INTERCONNECT WITH OUTLET ON EQUIP.
16	BOTTLE COOLER	115	60	1	5.5	1/3	5-15P	12"	SIMPLEX	18"	1	8' CORD, DO NOT PLUG INTO GFI OUTLET
19	REFRIGERATED BACKBAR CABINET	115	60	1	6	1/4	5-15P	12"	SIMPLEX	18"	1	8" CORD & PLUG
32	BLENDER STATION	115	60	1	15			18.5"	J-BOX	16"	1	INTERCONNECT WITH OUTLET ON EQUIP.
36	REFRIGERATED BACKBAR CABINET	115	60	1	6	1/4	5-15P	12"	SIMPLEX	18"	2	8" CORD & PLUG
37	ICE CUBER WITH BIN	208-230	60	1	4.3			12"	J-BOX	18"	1	

LEGEND -- ELECTRICAL CONNECTIONS

- DUPLEX RECEPT., 15-AMP, 120-VOLT, GROUND TYPE, HORIZONTAL MOUNT
- SIMPLEX RECEPT., 120-VOLT, GROUND TYPE, HORIZONTAL MOUNT
- SPECIAL PURPOSE OUTLET, GROUND TYPE, HORIZONTAL MOUNT
- JUNCTION BOX, DIRECT CONNECTION
- DISCONNECT SWITCH, DIRECT CONNECTION
- FLOOR/CEILING RECEPTACLE AS INDICATED
- (2) Telephone + (2) Data
- FIELD CONNECTIONS
- HARD WIRE CONNECTION POINT AT MACHINE



NOTE # E1
TYPICAL OUTLETS IN WALL ABOVE TABLE, BY ELECTRICIAN NOT TO SCALE

NOTE # E2
ALL NATIONAL, STATE, AND LOCAL CODES SHALL APPLY

NOTE # E3
ALL ELECTRICAL CONNECTIONS AND HARDWARE REQUIRED TO BE PROVIDED BY ELECTRICAL CONTRACTOR

NOTE # E4
ALL JUNCTION BOXES, OUTLETS, ETC. TO BE LOCATED SO AS TO NOT INTERFERE WITH EQUIPMENT

NOTE # E5
ALL RELAYS, CONTRACTORS, STARTERS, AND SWITCHES REQUIRED FOR EXHAUST & SUPPLY FANS TO BE PROVIDED BY ELECTRICAL CONTRACTOR UNLESS SPECIFIED

NOTE # E6
ELECTRICAL CONTRACTOR TO INTERCONNECT DISHMACHINE TO EXHAUST FAN FOR DISHMACHINE SO THAT THE FAN RUNS WHEN THE DISHMACHINE IS IN OPERATION.

NOTE # E7
ELECTRICAL CONTRACTOR TO INSTALL TABLE LIMIT SWITCH TO END OF CLEAN DISHTABLE TO THAT MACHINE STOPS WHEN SWITCH IS DEPRESSED.

NOTE # E8
ELECTRICAL CONTRACTOR TO CONNECT DRAIN LINE HEATER, PAN HEATER AND DODR HEATER FOR WALK-IN FREEZER.

Equipment ELECTRICAL Service Requirements

All Dimensions to be verified on the job site. Actual locations for floor drains, and any ventilating equipment to be determined by Engineer. Mechanical, Plumbing & Electrical to be checked and verified by Customers MEP Engineer. Remote Condensing Units to be located by Architect. Exhaust & Supply fans to be located by Architect.

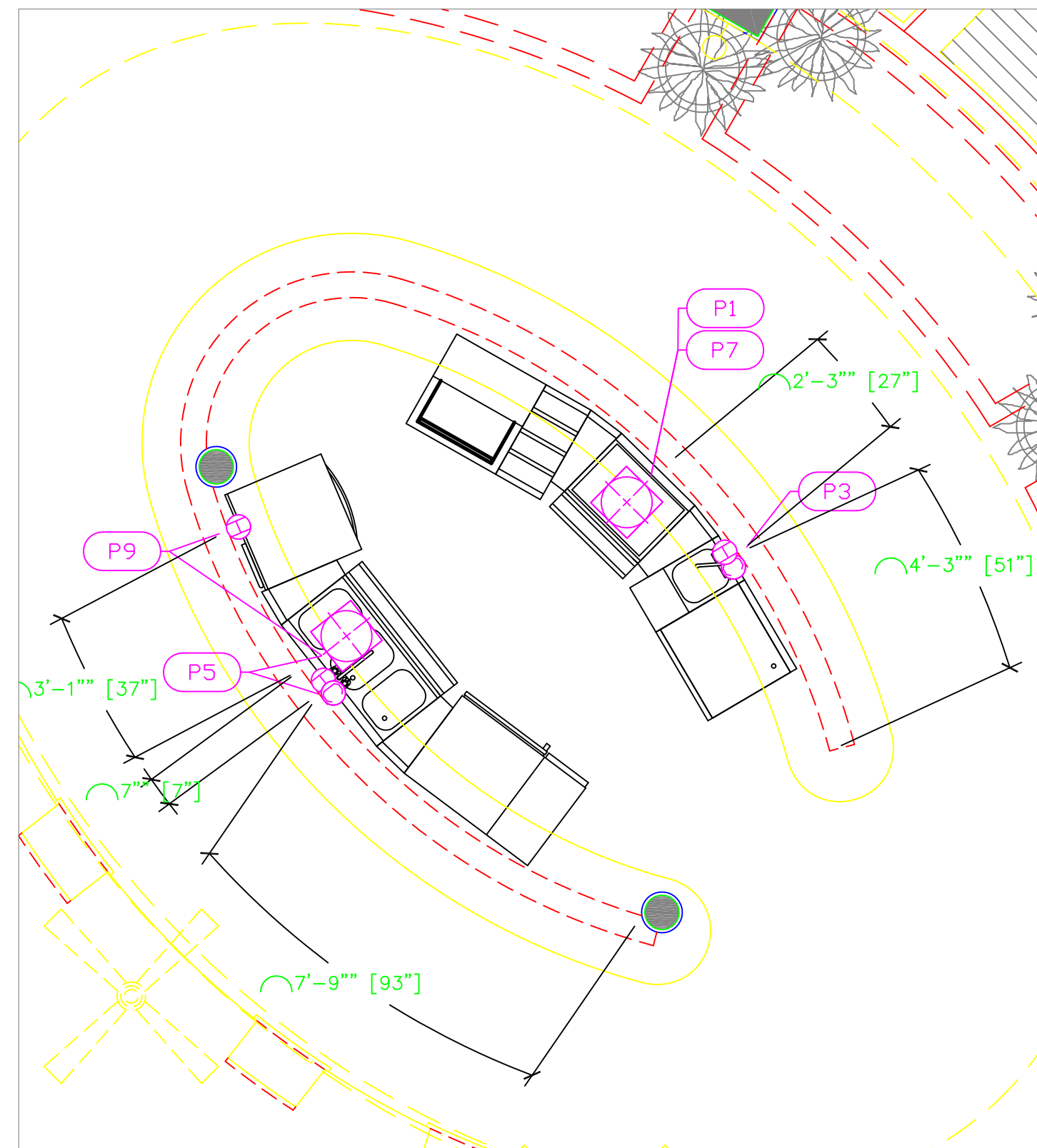
The Shore Club
Pool, Beach & Service Bars
Providenciales, T&C

Uni-Source Supply
International Inc.
2055 W 73rd Street, Miami, FL 33016
Ph: (305)826-8696 Fax: (305)826-9131

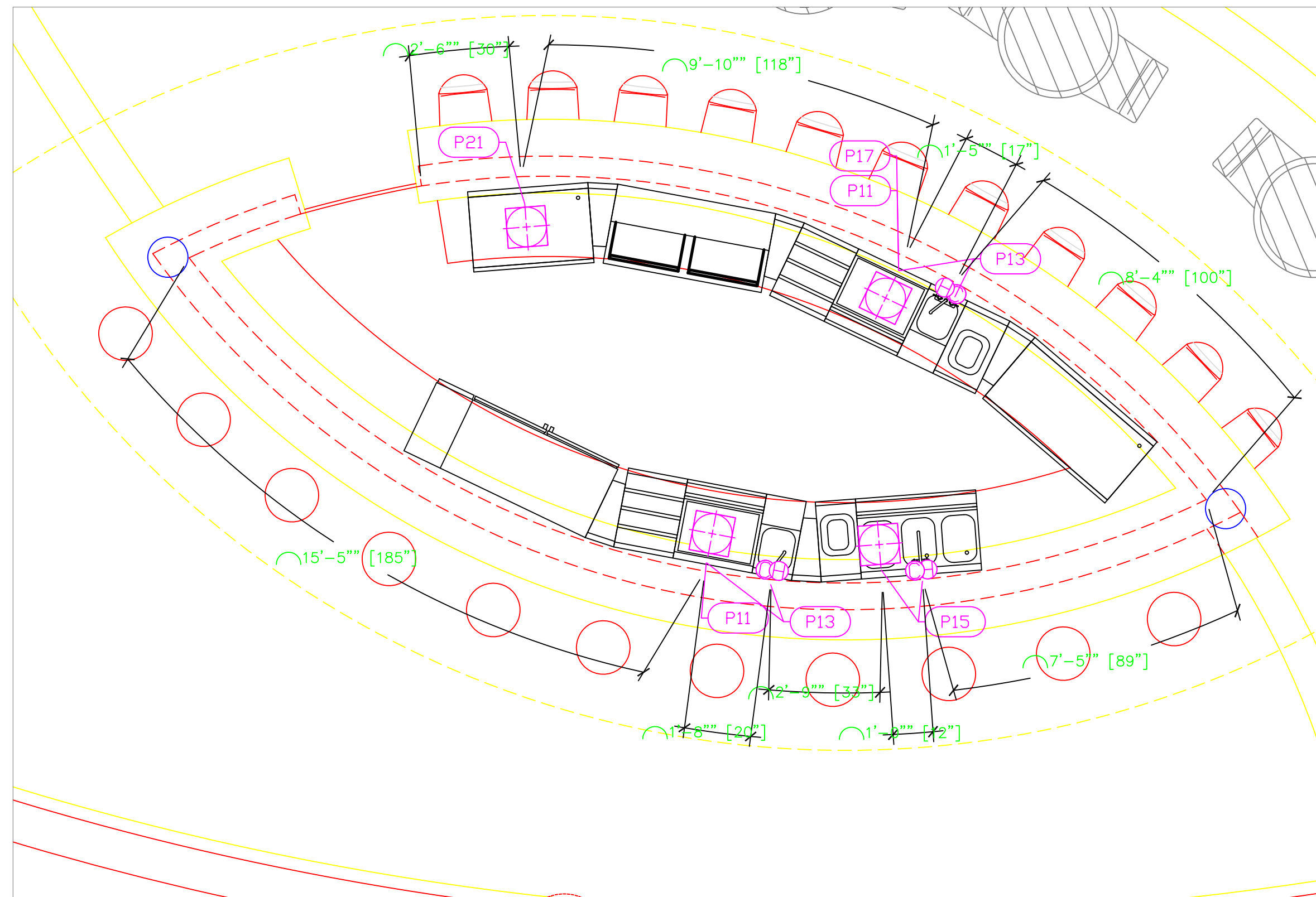
No.	Revision/Issue	Date
2	Changes based on Customer Review	6-25-15
3	Added Ice Machine to Service Bar	6-29-15
4	Updated Background, Added MEP Details	7-09-15
5	Added Factory Shop Drawings	10-08-15

Date
Oct 08, 2015
Drawn By
Dayne Gauntlett
Scale
3/8" = 1'0"

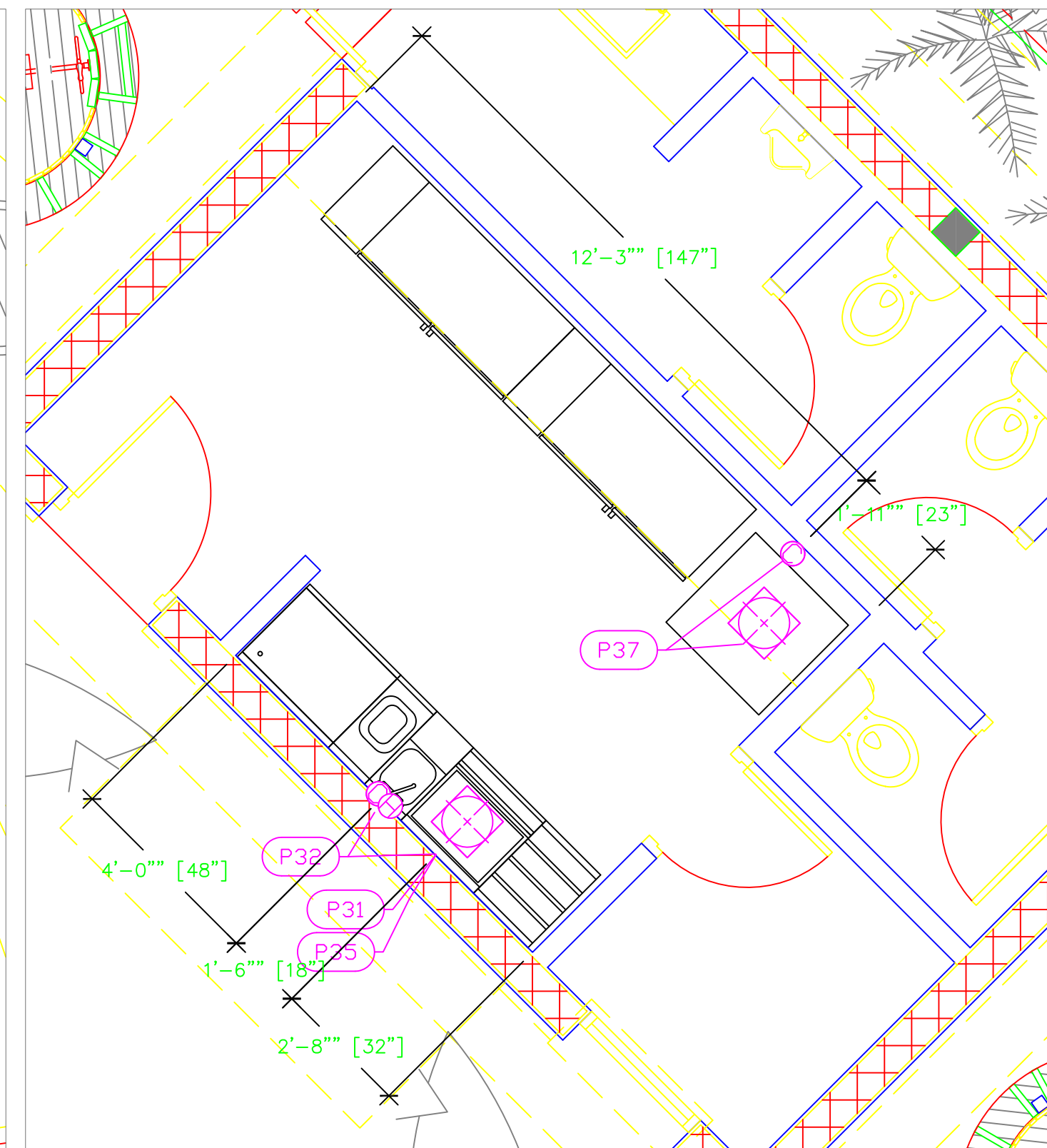
Sheet
PB-3



Pool



Beach



Service

PLUMBING SCHEDULE

ITEM No.	DESCRIPTION	Cold Water Size	Cold Water AFF	Hot Water Size	Hot Water AFF	H&C Rough-in	Direct Waste Size	Direct Waste AFF	Indirect Waste Size	Gas Size(in)	Gas Conn. AFF	Gas MBTU	QTY	Plumbing Remarks
1	ICE BIN								1"				1	WASTE TO FLOOR SINK
3	BLENDER STATION	1/2"	30"	1/2"	30"	12"			1"				1	WASTE TO FLOOR SINK
5	UNDERBAR SINK UNITS	1/2"	30"	1/2"	30"	12"			1"				1	WASTE TO FLOOR SINK
7	STORAGE CABINET								1"				1	WASTE TO FLOOR SINK
9	DISHWASHER, UNDERCOUNTER			1/2"	2"	12"			1-3/8"				1	WASTE TO FLOOR SINK
11	ICE BIN								1"				2	WASTE TO FLOOR SINK
13	BLENDER STATION	1/2"	30"	1/2"	30"	12"			1"				2	WASTE TO FLOOR SINK
15	UNDERBAR SINK UNITS	1/2"	30"	1/2"	30"	12"			1"				1	WASTE TO FLOOR SINK
17	STORAGE CABINET								1"				1	WASTE TO FLOOR SINK
21	STORAGE CABINET								1"				1	WASTE TO FLOOR SINK
31	ICE BIN								1"				1	WASTE TO FLOOR SINK
32	BLENDER STATION	1/2"	30"	1/2"	30"	12"			1"				1	WASTE TO FLOOR SINK
35	STORAGE CABINET								1"				1	WASTE TO FLOOR SINK
37	ICE CUBER WITH BIN	3/8"	36"			12"			3/4"				1	CONNECT WITH FILTER, 3/8" FLARE

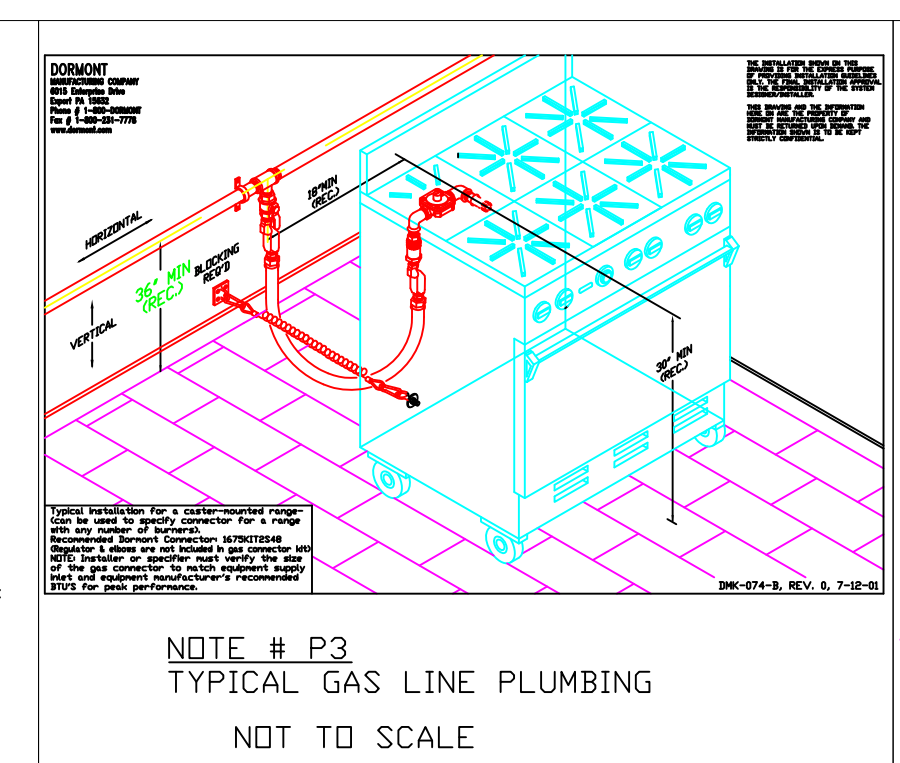
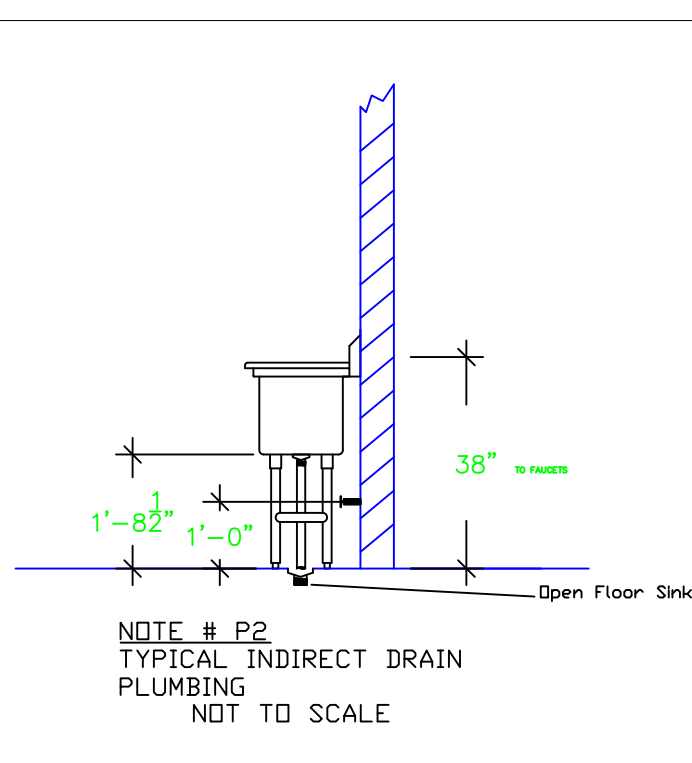
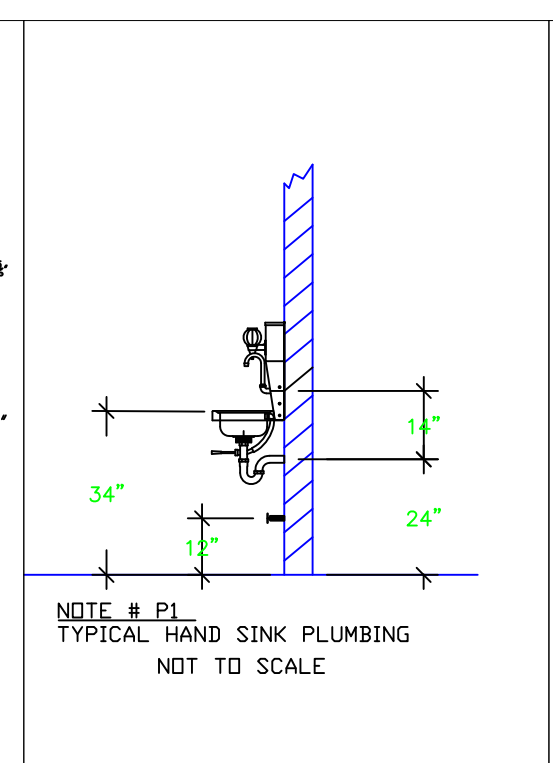
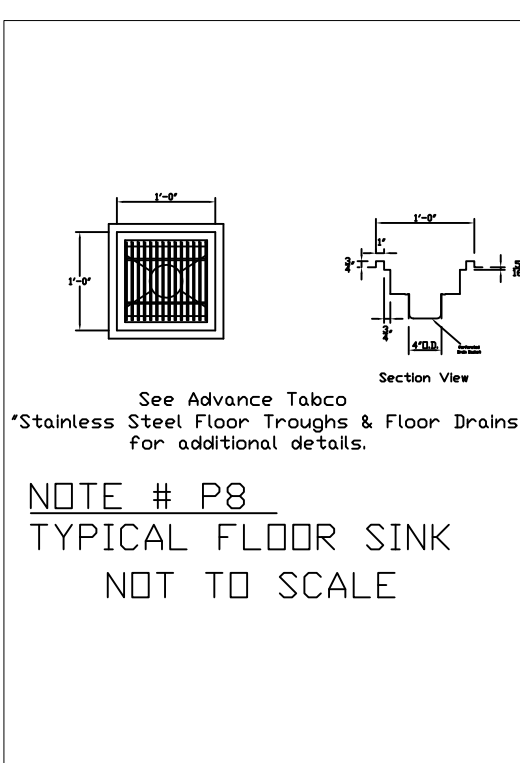
The Shore Club
Pool, Beach & Service Bars
Providenciales, T&C

Uni-Source Supply
 International Inc.
 2055 W 73rd Street, Miami, FL 33016
 Ph: (305)826-8696 Fax: (305)826-9131

No.	Revision/Issue	Date
2	Changes based on Customer Review	6-25-15
3	Added Ice Machine to Service Bar	6-29-15
4	Updated Background, Added MEP Details	7-09-15
5	Added Factory Shop Drawings	10-08-15

Date
Oct 08, 2015
 Drawn By
Dayne Gauntlett
 Scale
3/8" = 1'0"

Sheet
PB-4



- LEGEND -- PLUMBING CONNECTIONS**
- HW-HOT WATER, OR CW-COLD WATER
 - GAS
 - WASTE, DIRECT-CONNECTED
 - FLOOR SINK Advance Tabco FDR-1212
 - FLOOR DRAIN Josam 30000-A3
 - FUNNEL FLOOR DRAIN Josam 30000-E3
 - FIELD CONNECTIONS
 - CONNECTION POINT AT MACHINE

NOTE # P4: ALL NATIONAL, STATE, AND LOCAL CODES SHALL APPLY

NOTE # P5: ALL PLUMBING CONNECTIONS TO BE EXTENDED AND INTERCONNECTED TO EQUIPMENT AND ALL HARDWARE REQUIRED TO BE PROVIDED BY PLUMBING CONTRACTOR

NOTE # P6: PLUMBING CONTRACTOR TO VERIFY THAT ALL EQUIPMENT IS INSTALLED WITH THE APPROPRIATE GAS PRESSURE AND REGULATORS

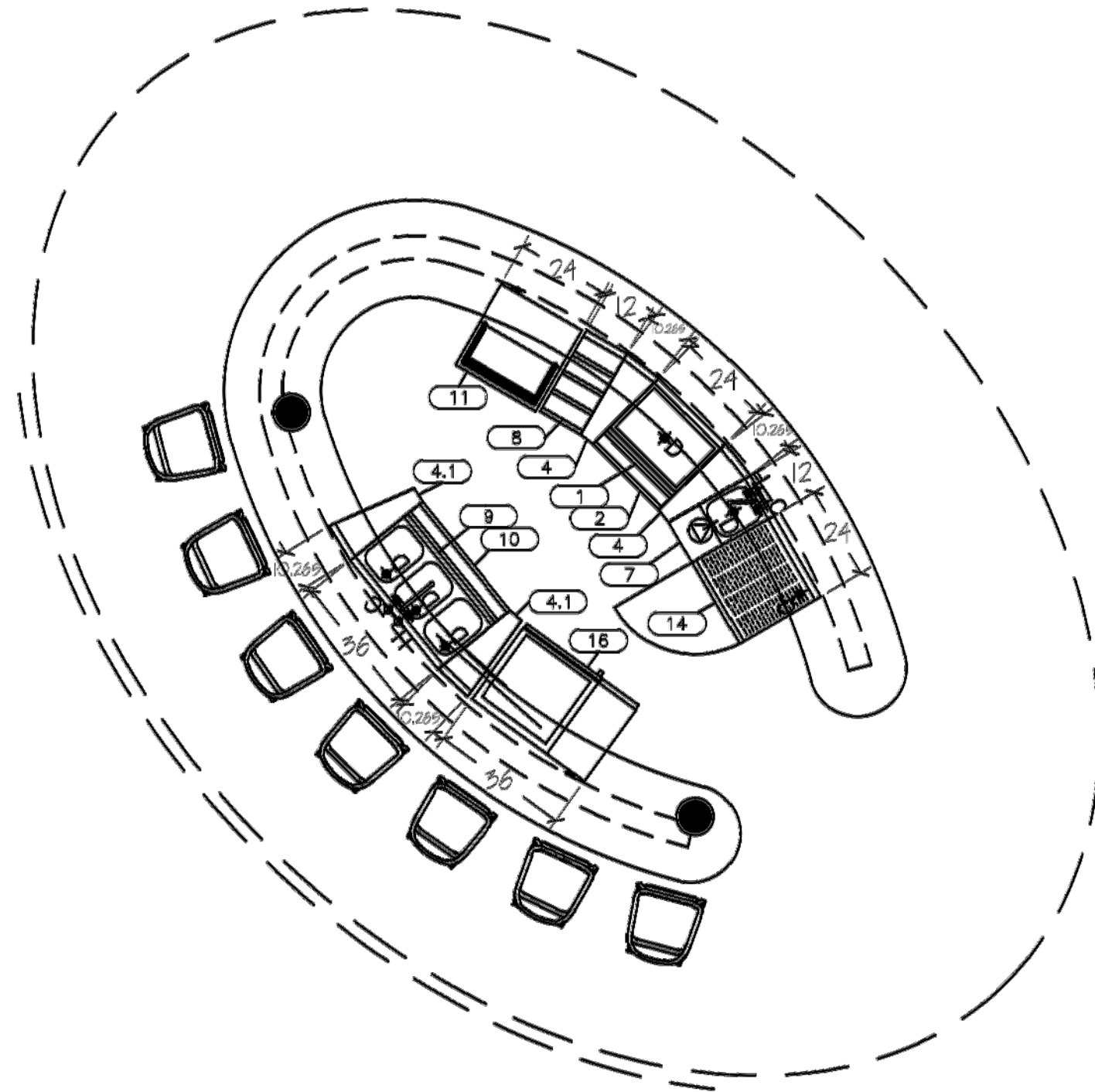
NOTE # P7: ALL WASTE LINES AND CONDENSATE LINES TO BE EXTEND FROM EQUIPMENT TO FLOOR DRAINS BY PLUMBING CONTRACTOR.

Equipment PLUMBING Service Requirements

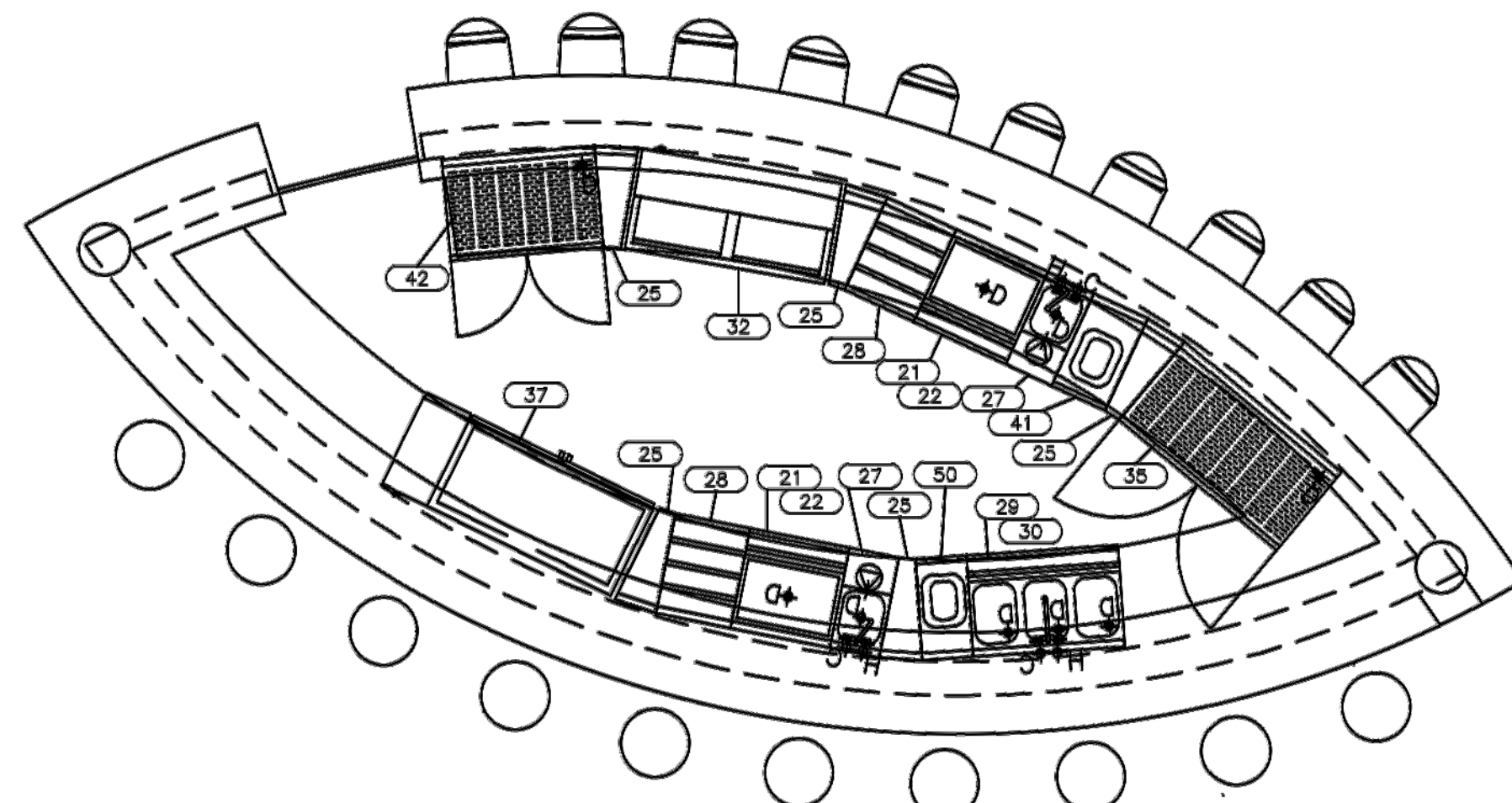
All Dimensions to be verified on the job site. Actual locations for floor drains, and any ventilating equipment to be determined by Engineer. Mechanical, Plumbing & Electrical to be checked and verified by Customers MEP Engineer. Remote Condensing Units to be located by Architect. Exhaust & Supply fans to be located by Architect.

The Shore Club
Pool, Beach & Service Bars
 Providenciales, T&C

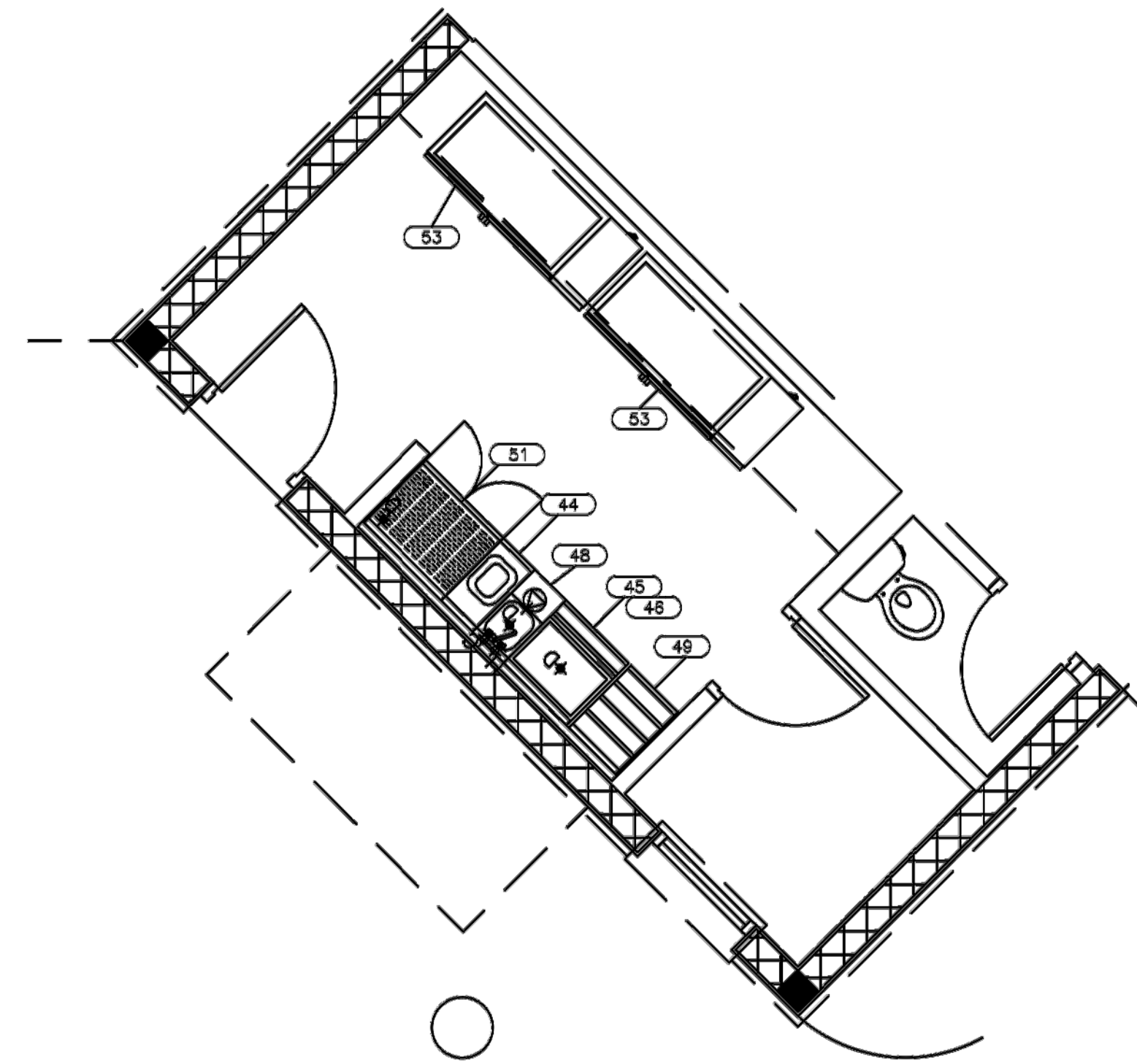
Uni-Source Supply
 International Inc.
 2055 W 73rd Street, Miami, FL 33016
 Ph: (305)826-8696 Fax: (305)826-9131



EQUIPMENT SCHEDULE				
Item No	Model Number	Qty	Equipment Category	Equipment Remarks
1	KR18-24	1	Underbar Ice Chest	
2	RS-24	1	Underbar Speed Rail	KR-SC24
4	KR18-R15D	2	Underbar Fillers & Drainboards	KR-702
4.1	KR18-R15D	2	Underbar Fillers & Drainboards	KR-702
7	KR18-12BD	1	Underbar Blender Station	
8	KR18-12RD-LC	1	Underbar Liquor Display	
9	KR18-33C	1	Underbar Sink	
10	RS-36	1	Underbar Speed Rail	
11	BC24-SS	1	Cooler, Bottle	BC-619; BC-100
14	KR18-SD24	1	Underbar Dry Storage	KR-SS
16	BS36L	1	Back Bar Cooler	



EQUIPMENT SCHEDULE				
Item No	Model Number	Qty	Equipment Category	Equipment Remarks
21	KR18-24	2	Underbar Ice Chest	
22	RS-24	2	Underbar Speed Rail	KR-SC24
25	KR18-R15D	5	Underbar Fillers & Drainboards	KR-702
27	KR18-12BD	2	Underbar Blender Station	
28	KR18-18RD-LC	2	Underbar Liquor Display	
29	KR18-33C	1	Underbar Sink	
30	RS-36	1	Underbar Speed Rail	KR-SC30
32	BC48-SS	1	Cooler, Bottle	(20 BC-619; BC-100
35	KR18-SD48	1	Underbar Dry Storage	KR-SS
37	BS60R	1	Back Bar Cooler	
41	KR18-T14R	1	Underbar Dry Waste	
42	KR18-SD36	1	Underbar Dry Storage	KR-SS
50	KR18-T12	1	Underbar Dry Waste	



EQUIPMENT SCHEDULE				
Item No	Model Number	Qty	Equipment Category	Equipment Remarks
44	KR18-T12	1	Underbar Dry Waste	
45	KR18-24	1	Underbar Ice Chest	
46	RS-24	1	Underbar Speed Rail	KR-SC24
48	KR18-12BD	1	Underbar Blender Station	
49	KR18-18RD-LC	1	Underbar Liquor Display	
51	KR18-SD30	1	Underbar Dry Storage	KR-SS
53	BS60R	2	Back Bar Cooler	

2	Changes based on Customer Review	6-25-15
3	Added Ice Machine to Service Bar	6-29-15
4	Updated Background, Added MEP Details	7-09-15
5	Added Factory Shop Drawings	10-08-15
No.	Revision/Issue	Date

Date
Oct 08 , 2015
 Drawn By
Dayne Gauntlett
 Scale
NTS

Sheet
PB-5



PROJECT:
THE SHORE

ROYAL SERIES
 1800 2100
 STANDARD SERIES
 1800 2100
 DEALER: **UNI-SOURCE**
 SCALE: 3/16"=1'-0" DATE: 10.6.2015 JOB#: 465614 1 OF 1
 APPROVAL: