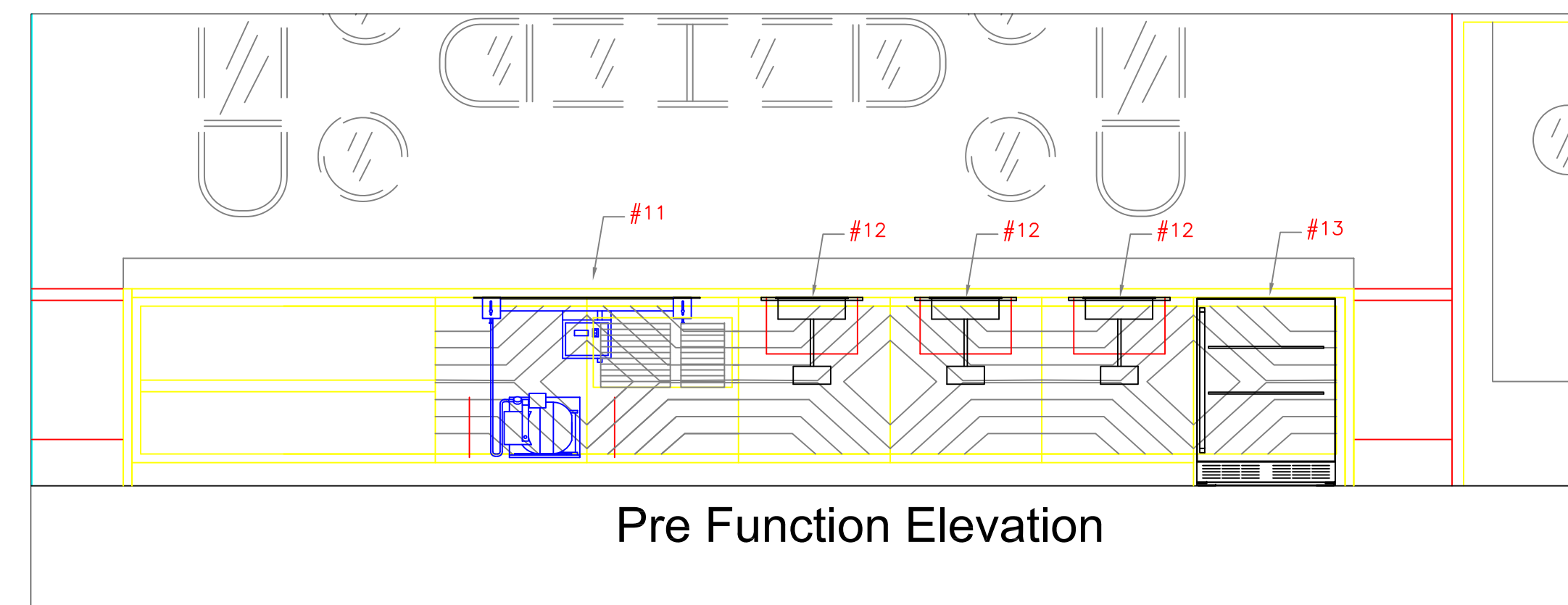


Pantry Elevation



Pre Function Elevation

ItemNo	Category	Mfr	Model	Quantity	Equipment Remarks
1	Reach-In Refrigerator	True	T-23-HC	1	
1.1	Reach-In Refrigerator	True	T-23-HC	1	
2	Work Table, Stainless Steel Top	Advance Tabco	MS-308	1	
2.1	Shelving, Wall-Mounted	Advance Tabco	WS-18-96-16	1	
3	Dishwasher, Undercounter	Insinger	RL-30	1	
4	Hand Sink	Advance Tabco	7-PS-66-1X	1	
5	Coffee Brewer	BUNN	51200.0100	1	
	Thermal Server, Brew-Thru Beverage Dispenser, Stand	BUNN	27850.0200	2	
	Drip Tray	BUNN	53452.0000	1	
5.1	Coffee Grinder	BUNN	05800.0003	1	
5.2	Water Filtration System	Everpure	EV927200	1	
6	Mobile Heated Cabinet	Metro	C539-HDC-U	3	
8	Ice Cuber	Hoshizaki	KM-515MWJ	1	
	Ice Bin	Hoshizaki	B-300SF	1	
8.1	Water Filtration System	Everpure	EV932421	1	
9	Work Table, Cabinet Base Hinged Doors	Advance Tabco	HK-SS-308	1	
	Sink	Advance Tabco	TA-11F	2	
9.1	Deck Mount Faucet	Krowne	15-302L	1	
9.2	Shelving, Wall-Mounted	Advance Tabco	WS-18-84-16	1	
10	Reach-In Freezer	True	T-23F-HC	1	
11	Cold Shelf	Hatco	CSU-36-F	1	
12	Induction Range, Built-In / Drop-In	CookTek	660801	3	
13b	Undercounter Refrigerator	Perlick	HD24RS	1	
31	Mobile Heated Cabinet	Metro	C539-HDC-U	3	Not in Drawing
32	Bun / Sheet Pan Rack	Advance Tabco	NR-20-X	6	Not in Drawing
33	Mixing Bowl Dolly	Vollrath	79818	1	Not in Drawing
34	Induction Range, Countertop	Vollrath	59500P	6	Not in Drawing
36	Dolly Truck	Advance Tabco	PD-1	2	Not in Drawing
37	Bun / Sheet Pan	Advance Tabco	18-A-26	108	Not in Drawing

EQUIPMENT LAYOUT

All Dimensions to be verified on the job site. Actual locations for floor drains, and any ventilating equipment to be determined by Engineer. Mechanical, Plumbing & Electrical to be checked and verified by Customers MEP Engineer. Remote Condensing Units to be located by Architect. Exhaust & Supply fans to be located by Architect.

Confidante Hotel
Pantry & Pre-Function
 Miami Beach, Florida



2055 W 73rd Street, Miami, FL 33016
 Ph: (305)826-8696 Fax: (305)826-9131

No.	Revision/Issue	Date
1	Preliminary Layout	4-21-18
2	Changes From Site Visit & Chef	7-11-18
3	Added MEP Details	8-21-18
4		

Date
August 21, 2018
 Drawn By
Dayne Gauntlett
 Scale
1/2" = 1'0"

Sheet
UFS-1

No Mechanical

Confidante Hotel
Pantry & Pre-Function
 Miami Beach, Florida

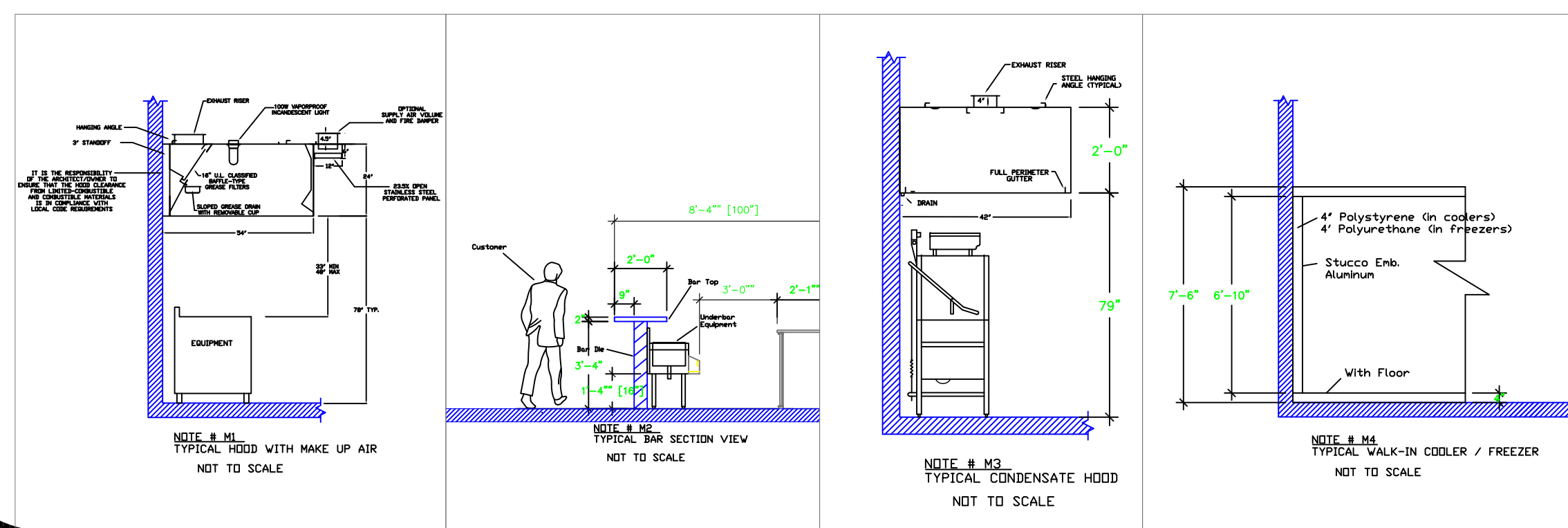


INTERNATIONAL INC.
 2055 W 73rd Street, Miami, FL 33016
 Ph:(305)826-8696 Fax:(305)826-9131

1	Preliminary Layout	4-21-18
2	Changes From Site Visit & Chef	7-11-18
3	Added MEP Details	8-21-18
4		
No.	Revision/Issue	Date

Date
August 21, 2018
 Drawn By
Dayne Gauntlett
 Scale
1/2" = 1'0"

Sheet
UFS-2



- LEGEND — MECHANICAL**
- EXHAUST DUCT COLLAR
 - SUPPLY DUCT COLLAR
 - INWALL BACKING FOR WALL SHELVES
 - RECESSED FLOOR
 - RAISED EQUIPMENT PAD

NOTE # M5
 ALL NATIONAL, STATE, AND LOCAL CODES SHALL APPLY

NOTE # M6
 ARCHITECT OR ENGINEER TO SIZE AND LOCATE, CONTRACTOR TO PROVIDE ALL OPENINGS FOR DUCTS, PLUMBING LINES, ELECTRICAL LINES, AND REFRIGERATION LINES, AS REQUIRED BY EQUIPMENT.

NOTE # M7
 SUPPLY FANS TO BE LOCATED A MINIMUM OF 10' FROM EXHAUST FANS.

NOTE # M8
 SHOP DRAWING WILL BE PROVIDED BY MANUFACTURER FOR HOOD, EXHAUST FANS, & SUPPLY FANS, ONCE ORDER IS PLACE WITH.

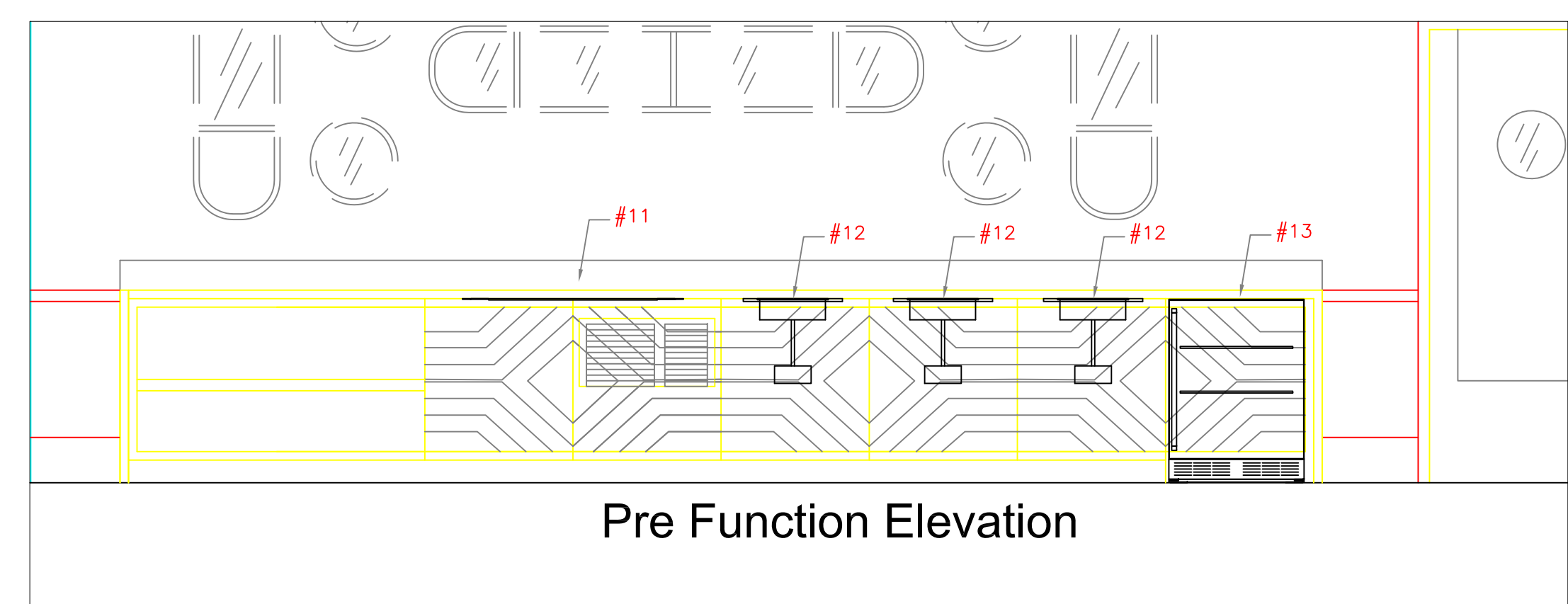
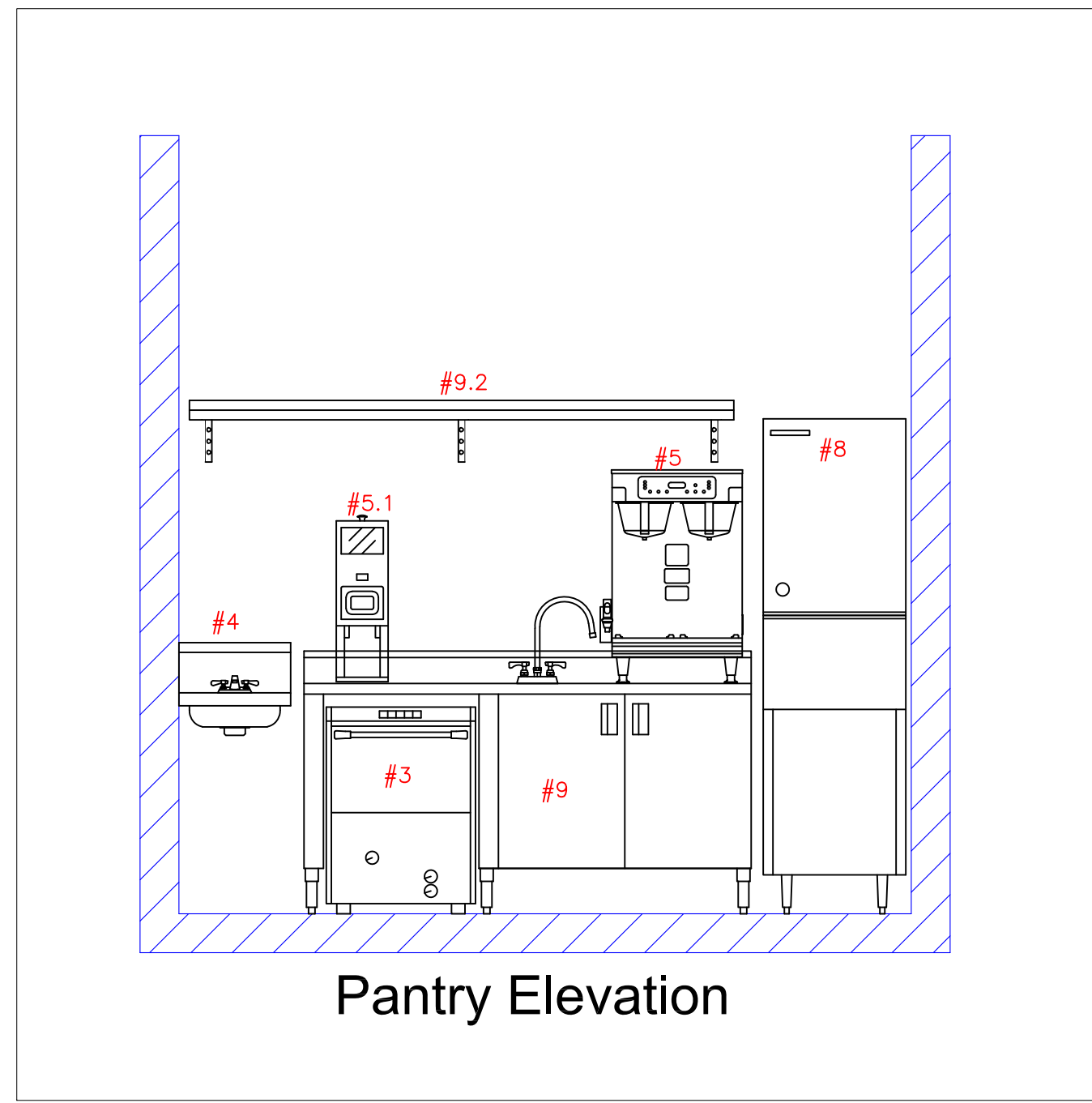
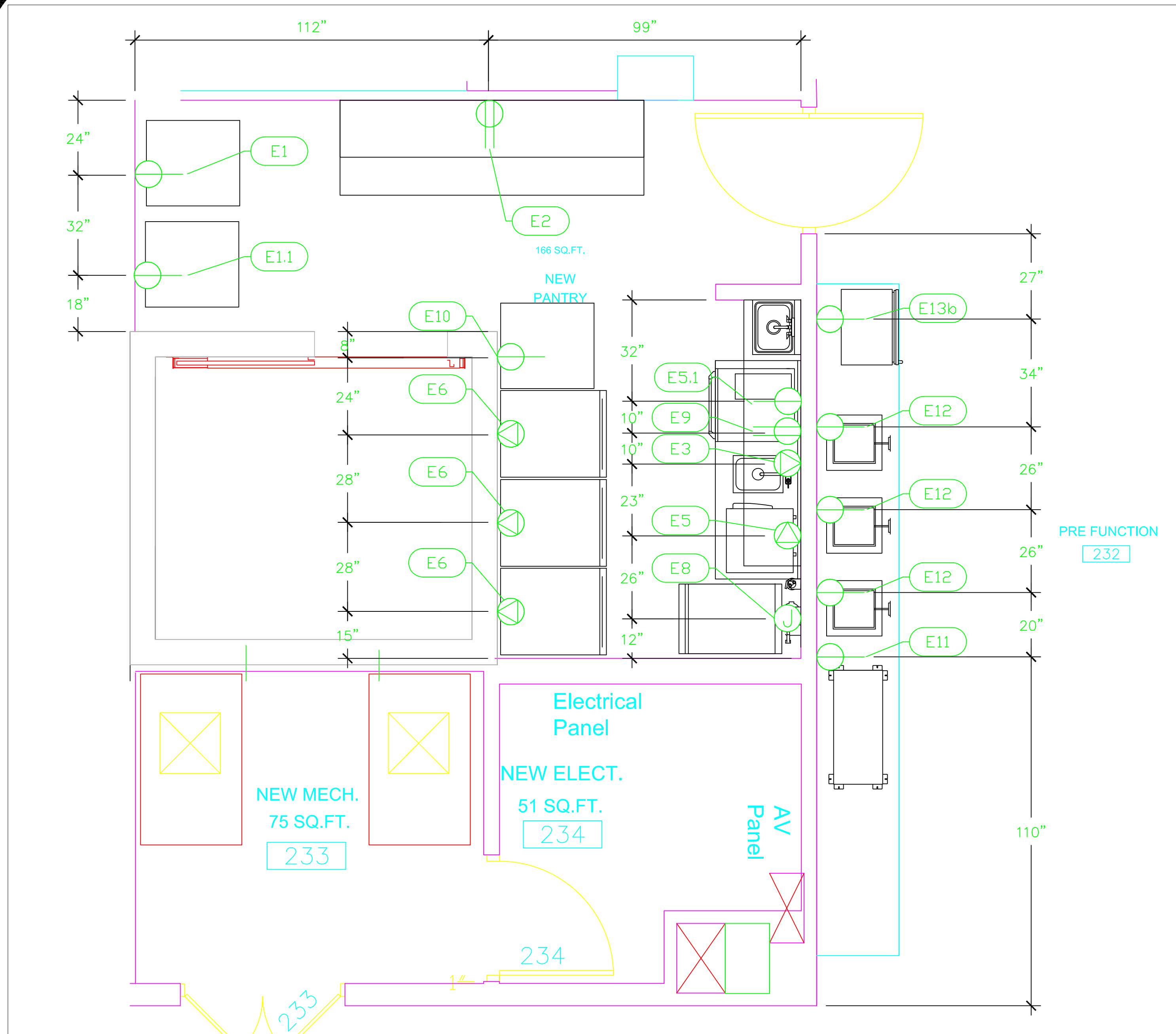
NOTE # M9
 GENERAL CONTRACTOR TO PROVIDE 1/2" PLYWOOD WALL BACKING FROM 48" TO 78" AFF FOR ALL WALL MOUNTED EQUIPMENT.

NOTE # M10
 CEILING HEIGHTS TO BE VERIFIED FOR SUFFICIENT CLEARANCE FOR EQUIPMENT.

NOTE # M11
 REFRIGERATION CONTRACTOR TO HANG EVAPORATORS FOR WALK-IN, RUN & CHARGE LINES BETWEEN EVAP. & CONDENSING UNIT.

Equipment MECHANICAL Service Requirements

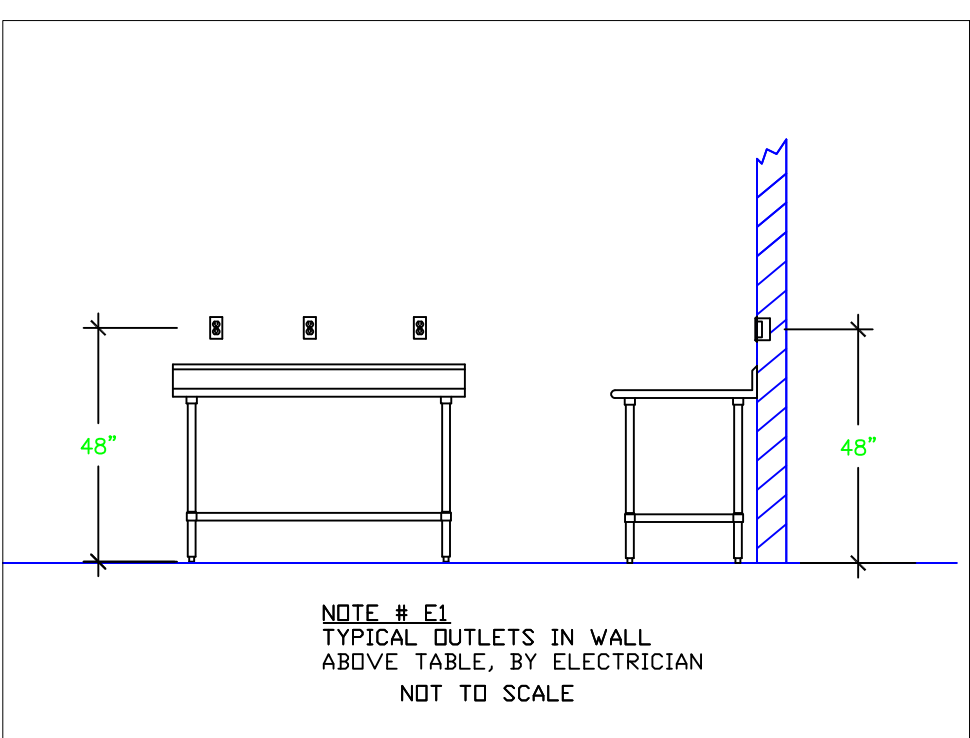
All Dimensions to be verified on the job site. Actual locations for floor drains, and any ventilating equipment to be determined by Engineer. Mechanical, Plumbing & Electrical to be checked and verified by Customers MEP Engineer. Remote Condensing Units to be located by Architect. Exhaust & Supply fans to be located by Architect.



ItemNo	Category	Voltage	Cycle	Phase	Amps	Hp	NEMA	Equip. AFF	ConnectionType	Rough-In AFF	Quantity	Electrical Remarks
1	Reach-In Refrigerator	115	60	1	2.8	1/5	5-15P	6"	Simplex	18"	1	
1.1	Reach-In Refrigerator	115	60	1	2.8	1/5	5-15P	6"	Simplex	18"	1	
2	Work Table, Stainless Steel Top	115	60	1	15			48"	Duplex	48"	1	Convenience Outlet. See Note E1
3	Dishwasher, Undercounter	208-240	60	1	20	1	L6-30P	6"	Special	18"	1	L6-30R by Electrician
5	Coffee Brewer	120/240	60	1	25.0			48"	Special	48"	1	Electrician to supply Plug & Receptacle
5.1	Coffee Grinder	120	60	1	9.4	3/4	5-15P	48"	Simplex	48"	1	
6	Mobile Heated Cabinet	120	60	1	16.7		5-20P	6"	Special	18"	3	5-20R by Electrician
8	Ice Cuber	115	60	1	9.1			58"	J-Box	72"	1	
9	Work Table, Cabinet Base Hinged Doors	115	60	1	15			48"	Duplex	48"	1	Convenience Outlet. See Note E1
10	Reach-In Freezer	115	60	1	3.7	1/2	5-15P	6"	Simplex	18"	1	
11	Cold Shelf	120	60	1	6.7	1/4	5-15P	36"	Simplex	18"	1	
12	Induction Range, Built-In / Drop-In	100-120	50/60	1	6.0		5-15P	36"	Simplex	18"	3	
13b	Undercounter Refrigerator	115	60	1	2.3	1/6	5-15P	6"	Simplex	18"	1	

LEGEND -- ELECTRICAL CONNECTIONS

- DUPLEX RECEPT., 15-AMP, 120-VOLT, GROUND TYPE, HORIZONTAL MOUNT
- SIMPLEX RECEPT., 120-VOLT, GROUND TYPE, HORIZONTAL MOUNT
- SPECIAL PURPOSE OUTLET, GROUND TYPE, HORIZONTAL MOUNT
- JUNCTION BOX, DIRECT CONNECTION
- DISCONNECT SWITCH, DIRECT CONNECTION
- FLOOR/CEILING RECEPTACLE AS INDICATED
- (2) Telephone + (2) Data
- FIELD CONNECTIONS
- HARD WIRE CONNECTION POINT AT MACHINE



NOTE # E2
ALL NATIONAL, STATE, AND LOCAL CODES SHALL APPLY

NOTE # E3
ALL ELECTRICAL CONNECTIONS AND HARDWARE REQUIRED TO BE PROVIDED BY ELECTRICAL CONTRACTOR

NOTE # E4
ALL JUNCTION BOXES, OUTLETS, ETC. TO BE LOCATED SO AS TO NOT INTERFERE WITH EQUIPMENT

NOTE # E5
ALL RELAYS, CONTRACTORS, STARTERS, AND SWITCHES REQUIRED FOR EXHAUST & SUPPLY FANS TO BE PROVIDED BY ELECTRICAL CONTRACTOR UNLESS SPECIFIED

NOTE # E6
ELECTRICAL CONTRACTOR TO INTERCONNECT DISHWASHER TO EXHAUST FAN FOR DISHWASHER SO THAT THE FAN RUNS WHEN THE DISHWASHER IS IN OPERATION.

NOTE # E7
ELECTRICAL CONTRACTOR TO INSTALL TABLE LIMIT SWITCH TO END OF CLEAN DISHTABLE TO THAT MACHINE STOPS WHEN SWITCH IS DEPRESSED.

NOTE # E8
ELECTRICAL CONTRACTOR TO CONNECT DRAIN LINE HEATER, PAN HEATER AND DDDR HEATER FOR WALK-IN FREEZER.

Equipment ELECTRICAL Service Requirements

All Dimensions to be verified on the job site. Actual locations for floor drains, and any ventilating equipment to be determined by Engineer. Mechanical, Plumbing & Electrical to be checked and verified by Customers MEP Engineer. Remote Condensing Units to be located by Architect. Exhaust & Supply fans to be located by Architect.

Confidante Hotel
Pantry & Pre-Function
Miami Beach, Florida



INTERNATIONAL INC.
2055 W 73rd Street, Miami, FL 33016
Ph:(305)826-8696 Fax:(305)826-9131

1	Preliminary Layout	4-21-18
2	Changes From Site Visit & Chef	7-11-18
3	Added MEP Details	8-21-18
4		
No.	Revision/Issue	Date

Date
August 21, 2018
Drawn By
Dayne Gauntlett
Scale
1/2" = 1'0"

Sheet
UFS-3

Confidante Hotel
Pantry & Pre-Function
 Miami Beach, Florida

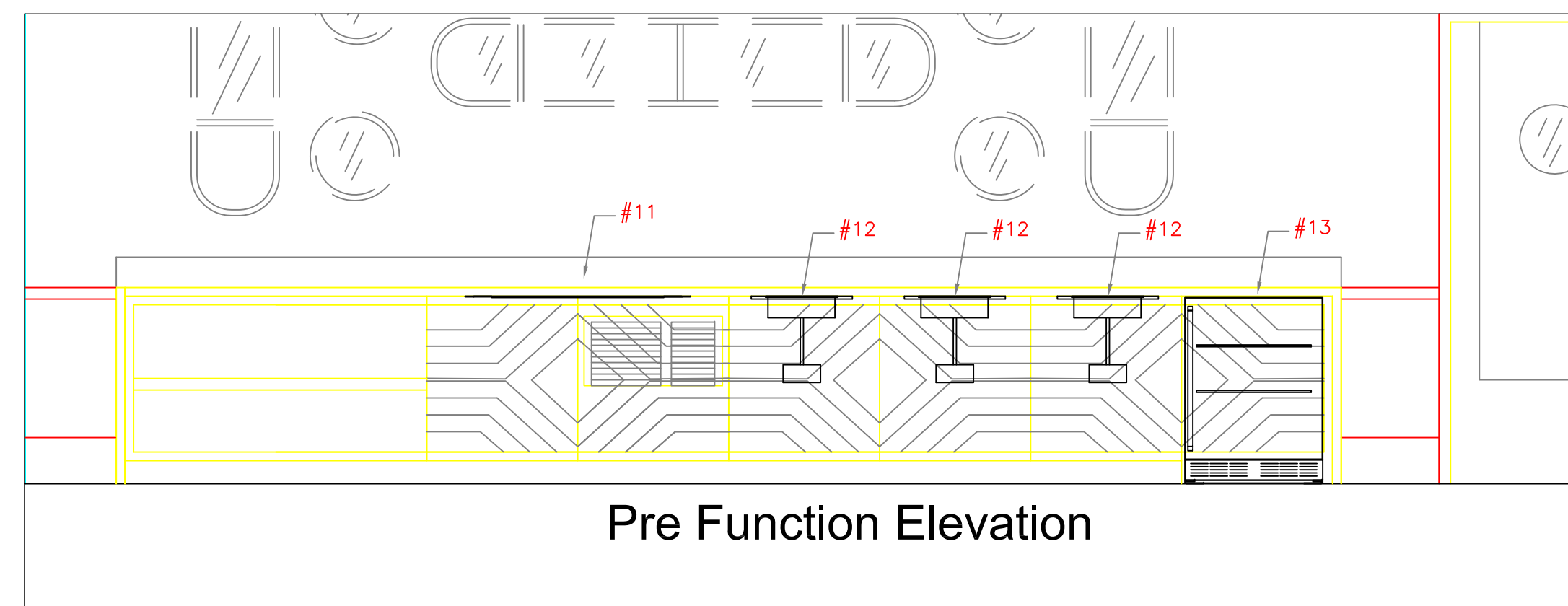
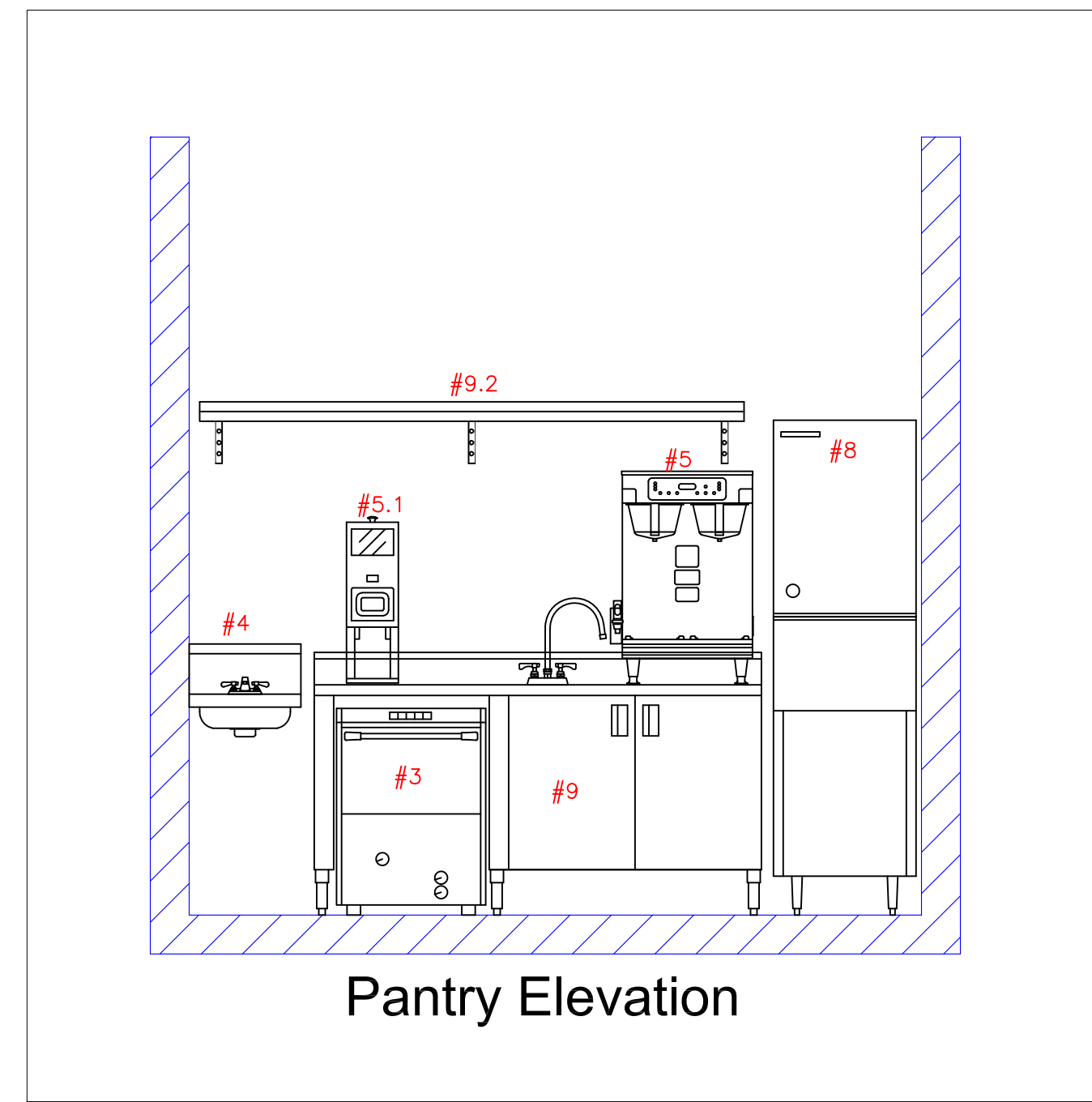
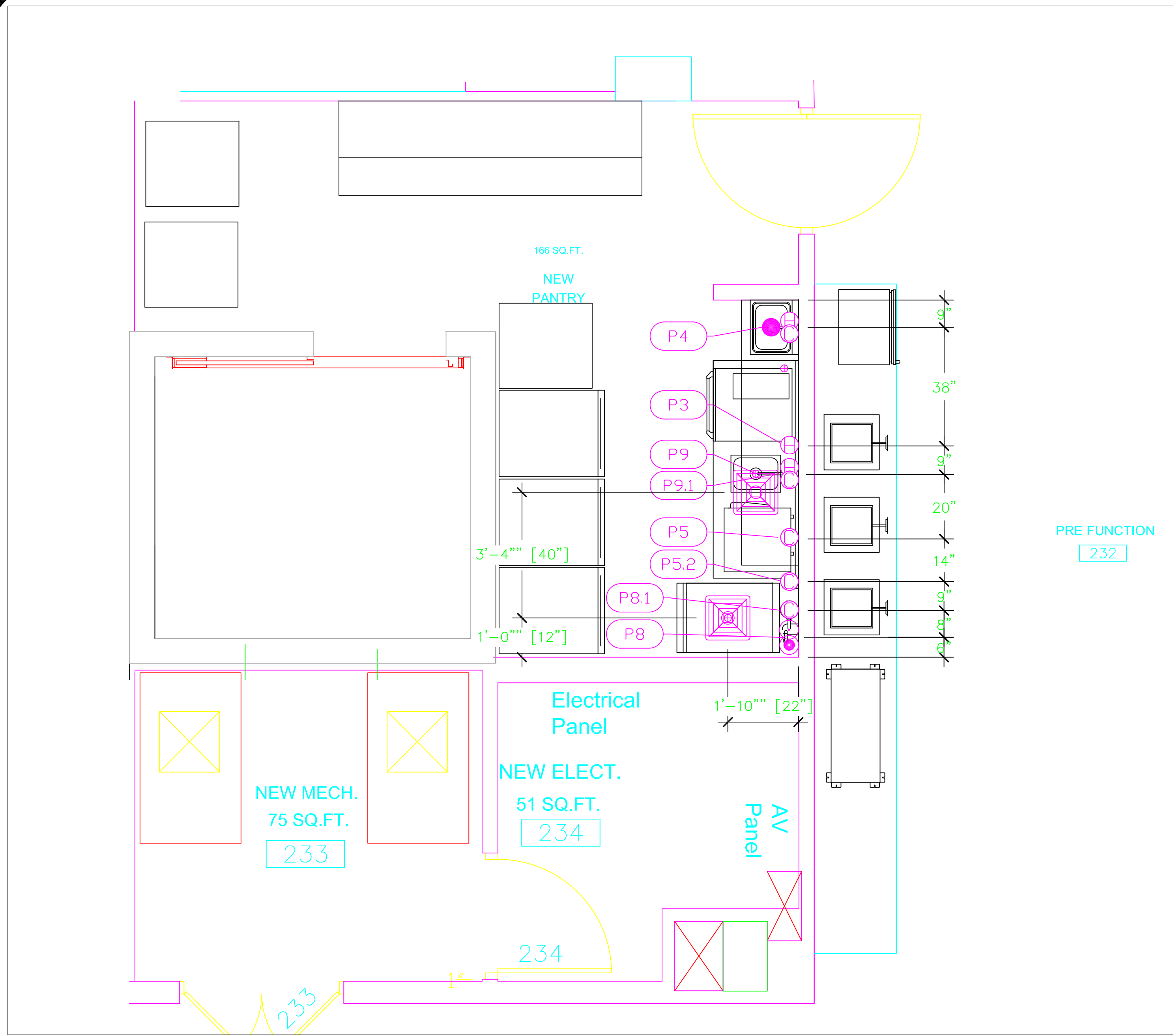


INTERNATIONAL INC.
 2055 W 73rd Street, Miami, FL 33016
 Ph:(305)826-8696 Fax:(305)826-9131

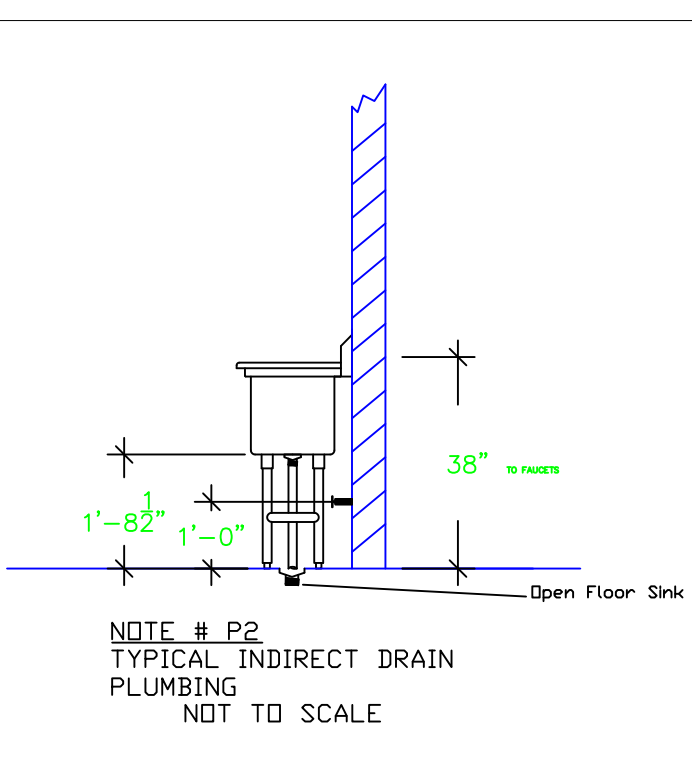
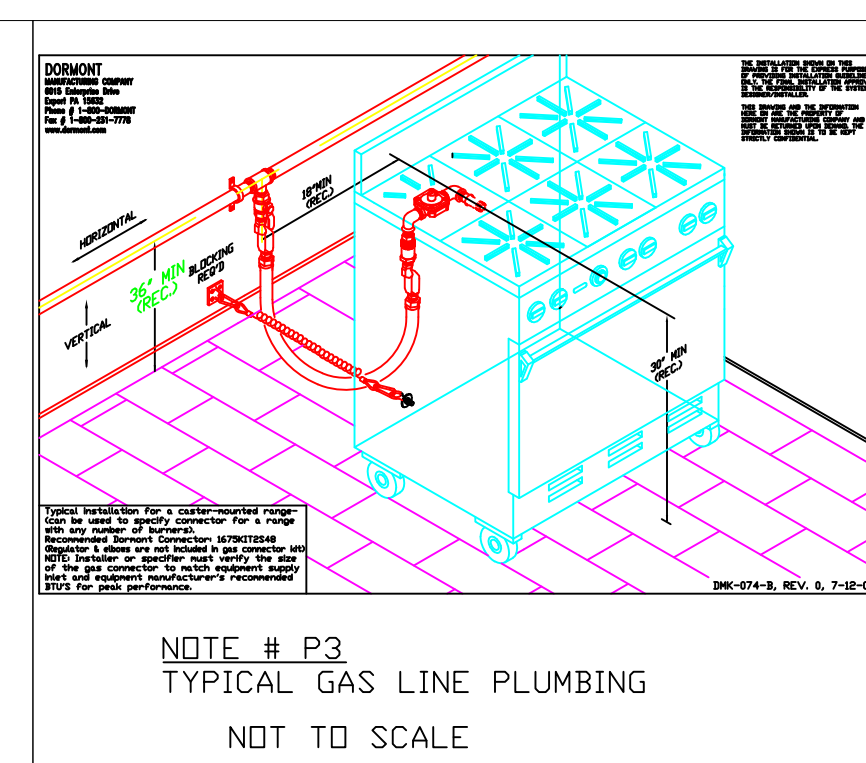
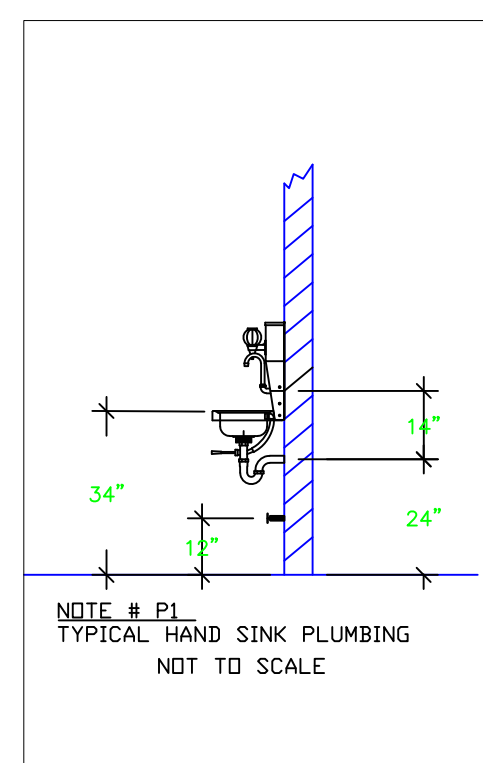
1	Preliminary Layout	4-21-18
2	Changes From Site Visit & Chef	7-11-18
3	Added MEP Details	8-21-18
4		
No.	Revision/Issue	Date

Date
August 21, 2018
 Drawn By
Dayne Gauntlett
 Scale
1/2" = 1'0"

Sheet
UFS-4



PLUMBING SCHEDULE														
ITEM NO.	DESCRIPTION	COLD WATER SIZE	COLD WATER AFF	HOT WATER SIZE	HOT WATER AFF	H&C Rough-In	DIRECT WASTE SIZE	DIRECT WASTE AFF	INDIRECT WASTE SIZE	GAS SIZE(IN)	GAS CONN. AFF	GAS MBTU	QTY	PLUMBING REMARKS
3	Dishwasher, Undercounter			3/4"	6"	12"			3/4"				1	Waste to Floor Sink
4	Hand Sink	1/2"	36"	1/2"	36"	12"	1-1/2"	24"					1	(1) set of 1" faucet holes, 4" OC, splash mount
5	Coffee Brewer	3/8"	36"			NA							1	Incoming Water from Filter 5.2
5.2	Water Filtration System	1/4"	36"			12"							1	Interconnect with Brewer #5
8	Ice Cuber	1/2"	72"			NA			3/4"				1	Incoming Water from Filter 8.1
	Ice Bin								3/4"				1	Waste to Floor Sink
8.1	Water Filtration System	3/4"	36"			12"							1	Interconnect with Ice Machine 8
9	Work Table, Cabinet Base Hinged Doors Sink								1-1/2"				2	Waste to Floor Sink
9.1	Deck Mount Faucet	1/2"	36"	1/2"	36"	12"							1	



- LEGEND -- PLUMBING CONNECTIONS**
- HW--HOT WATER, OR CW--COLD WATER
 - GAS
 - WASTE, DIRECT--CONNECTED
 - WASTE, INDIRECT to Floor Sink
 - FLOOR DRAIN Josam 30000-A3
 - FUNNEL FLOOR DRAIN Josam 30000-E3
 - FLOOR SINK ZURN FD-2370-Y-PV4-F
 - CHILLED WATER IN & OUT

NOTE # P4: ALL NATIONAL, STATE, AND LOCAL CODES SHALL APPLY

NOTE # P5: ALL PLUMBING CONNECTIONS TO BE EXTENDED AND INTERCONNECTED TO EQUIPMENT AND ALL HARDWARE REQUIRED TO BE PROVIDED BY PLUMBING CONTRACTOR

NOTE # P6: PLUMBING CONTRACTOR TO VERIFY THAT ALL EQUIPMENT IS INSTALLED WITH THE APPROPRIATE GAS PRESSURE AND REGULATORS

NOTE # P7: ALL WASTE LINES AND CONDENSATE LINES TO BE EXTEND FROM EQUIPMENT TO FLOOR DRAINS BY PLUMBING CONTRACTOR.

Equipment PLUMBING Service Requirements

All Dimensions to be verified on the job site. Actual locations for floor drains, and any ventilating equipment to be determined by Engineer. Mechanical, Plumbing & Electrical to be checked and verified by Customers MEP Engineer. Remote Condensing Units to be located by Architect. Exhaust & Supply fans to be located by Architect.